



LKT Laboratories, Inc.

Meglumine

Phone: 888-558-5227
651-644-8424
Fax: 888-558-7329
Email: getinfo@lktlabs.com
Web: lktlabs.com

Product Information

Product ID M1826

CAS No. 6284-40-8

Chemical Name 1-Deoxy-1-(methylamino)-D-glucitol

Synonym N-Methylglucamine, Meglumine

Formula C₇H₁₇NO₅

Formula Wt. 195.21

Melting Point 128-129 °C

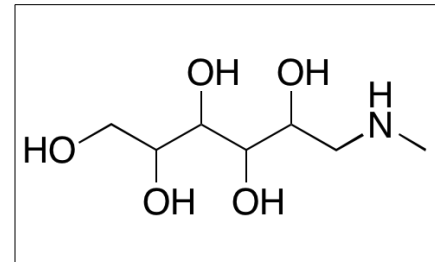
Purity ≥98%

Solubility Soluble in water and alcohol.

Store Temp Ambient

Ship Temp Ambient

Description Meglumine is an amino sugar derived from sorbitol that is clinically used as a bulking agent for other active compounds in the formulation of various pharmaceutical drugs, such as meglumine antimoniate and flunixin meglumine.



Bulk quantities available upon request

Product ID	Size
M1826	25 g
M1826	100 g
M1826	500 g
M1826	1 kg

References Borborema SE, Schwendener RA, Osso JA Jr, et al. Uptake and antileishmanial activity of meglumine antimoniate-containing liposomes in Leishmania (Leishmania) major-infected macrophages. *Int J Antimicrob Agents*. 2011 Oct;38(4):341-7. PMID: 21783345.

Rossetti RC, Perdigão A, Mesquita FS, et al. Effects of flunixin meglumine, recombinant bovine somatotropin and/or human chorionic gonadotropin on pregnancy rates in Nelore cows. *Theriogenology*. 2011 Sep 1;76(4):751-8. PMID: 21719091.

Caution: This product is intended for laboratory and research use only. It is not for human or drug use.