

## Product Information

**Product ID** L2800

**CAS No.** 639052-78-1

**Chemical Name**

**Synonym**

**Formula** C<sub>16</sub>H<sub>13</sub>ClN<sub>2</sub>OS

**Formula Wt.** 316.80

**Melting Point**

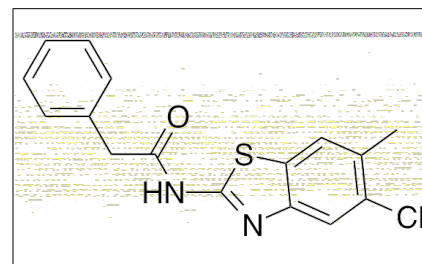
**Purity** ≥98%

**Solubility** 100mM in DMSO

**Store Temp** -20° C

**Ship Temp** Ambient

**Description** LH846 is an inhibitor of casein kinase 1δ (CK1δ) that also displays activity against CK1α and CK1ε. In research models, this compound lengthens the circadian period.



**Bulk quantities available upon request**

<b>Product ID</b>	<b>Size</b>
L2800	5 mg
L2800	25 mg

**References** Lee JW, Hirota T, Peters EC, et al. A small molecule modulates circadian rhythms through phosphorylation of the period protein. *Angew Chem Int Ed Engl.* 2011 Nov 4;50(45):10608-11. PMID: 21954091.

**Caution:** This product is intended for laboratory and research use only. It is not for human or drug use.