

Product Information

Product ID K6276
CAS No. 1421923-86-5
Chemical Name (E)-3-(3-(3,5-bis(trifluoromethyl)phenyl)-1H-1,2,4-triazol-1-yl)-N'-(pyrazin-2-yl)acrylohydrazide
Synonym Selinexor E-isomer, Selinexor trans-isomer, KPT-330 E-isomer, E-KPT-330

Formula C₁₇H₁₁F₆N₇O
Formula Wt. 443.31

Melting Point

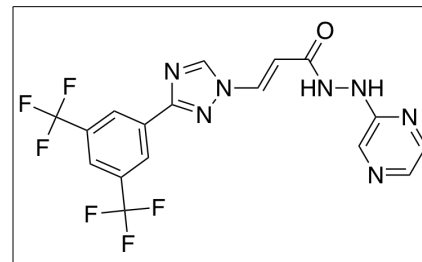
Purity ≥99%

Solubility DMSO 88 mg/mL (198.5 mM)
Ethanol 40 mg/mL (90.23 mM)
Water Insoluble

Store Temp -20°C

Ship Temp Ambient

Description KPT-330 is a CRM1-selective inhibitor of nuclear export (SINE) that inhibits protein trafficking from the nucleus. KPT-330 displays anticancer chemotherapeutic activity. In mesothelioma cells, this compound inhibits cell growth and induces G1 phase cell cycle arrest and apoptosis; in vivo, it suppresses tumor growth.



Bulk quantities available upon request

Product ID	Size
K6276	1 mg
K6276	5 mg
K6276	25 mg

References Ishizawa J, Kojima K, Hail N Jr, et al. Expression, function, and targeting of the nuclear exporter chromosome region maintenance 1 (CRM1) protein. *Pharmacol Ther.* 2015 Jun 3. [Epub ahead of print]. PMID: 26048327.

De Cesare M, Cominetti D, Doldi V, et al. Anti-tumor activity of selective inhibitors of XPO1/CRM1-mediated nuclear export in diffuse malignant peritoneal mesothelioma: the role of survivin. *Oncotarget.* 2015 May 30;6(15):13119-32. PMID: 25948791.

Parikh K, Cang S, Sekhri A, et al. Selective inhibitors of nuclear export (SINE)--a novel class of anti-cancer agents. *J Hematol Oncol.* 2014 Oct 15;7:78. PMID: 25316614.

Caution: This product is intended for laboratory and research use only. It is not for human or drug use.