



LKT Laboratories, Inc.  
**GBR 12935 Dihydrochloride**

Phone: 888-558-5227  
651-644-8424  
Fax: 888-558-7329  
Email: [getinfo@lktlabs.com](mailto:getinfo@lktlabs.com)  
Web: [lktlabs.com](http://lktlabs.com)

## Product Information

Product ID G0668

CAS No. 67469-81-2

**Chemical Name**

**Synonym**

Formula  $C_{28}H_{34}N_2O \cdot 2HCl$

Formula Wt. 487.51

**Melting Point**

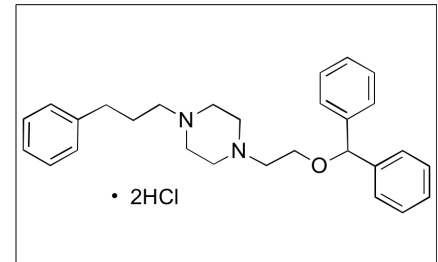
Purity  $\geq 98\%$

Solubility DMSO: 20 mg/mL

Store Temp  $-20^{\circ}C$

Ship Temp Ambient

**Description** GBR 12935 is an inhibitor of the dopamine transporter (DAT) that increases activation of DA receptors and is used to study DA signaling. This compound increases reward and reinforcement signaling, mimicking the activation of D1 and D2 receptors and increases in glutamate levels that occur during chronic administration of abused substances such as cocaine.



**Bulk quantities available upon request**

Product ID	Size
G0668	5 mg
G0668	25 mg
G0668	100 mg

**References** Root DH, Hoffman AF, Good CH, et al. Norepinephrine activates dopamine D4 receptors in the rat lateral habenula. *J Neurosci.* 2015 Feb 25;35(8):3460-9. PMID: 25716845.

Zuo W, Chen L, Wang L, et al. Cocaine facilitates glutamatergic transmission and activates lateral habenular neurons. *Neuropharmacology.* 2013 Jul;70:180-9. PMID: 23347950.

Janowsky A, Berger P, Vocci F, et al. Characterization of sodium-dependent [ $^3H$ ]GBR-12935 binding in brain: a radioligand for selective labelling of the dopamine transport complex. *J Neurochem.* 1986 Apr;46(4):1272-6. PMID: 3081686.

**Caution:** This product is intended for laboratory and research use only. It is not for human or drug use.