



Product Information

Product ID G0245

CAS No. 4233-96-9

Chemical Name

Synonym

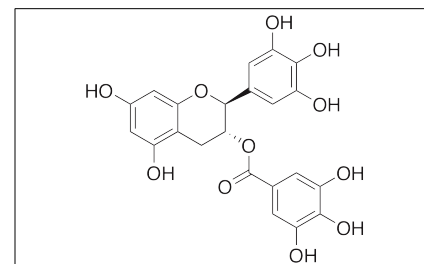
Formula $C_{22}H_{18}O_{11}$

Formula Wt. 458.37

Melting Point

Purity $\geq 98\%$

Solubility



Bulk quantities available upon request

Product ID	Size
G0245	1 mg
G0245	5 mg
G0245	10 mg

Store Temp 4°C

Ship Temp Ambient

Description Galocatechin galleate (GCG) is a polyphenol originally derived from a variety of sources, including green tea, coffee, safflower, and almonds. GCG exhibits a wide variety of beneficial properties, including anti-diabetic, anti-osteoporotic, antiviral, anti-parasitic, and anticancer chemotherapeutic activities. GCG inhibits amyloid formation by islet amyloid polypeptide (amylin) and also inhibits glutathione-S-transferase in cellular models. GCG inhibits HIV integrase, preventing its ability to bind to DNA. Separately, this compound prevents hatching of nematodes in vivo. GCG also has positive effects on bone metabolism, decreasing osteoclastogenesis and inhibiting osteoclast differentiation.

References Masler EP. Effects of catechin polyphenols and preparations from the plant-parasitic nematode *Heterodera glycines* on protease activity and behaviour in three nematode species. *J Helminthol*. 2013 May 2;1-8. [Epub ahead of print]. PMID: 23635519.

Timmel MA, Byl JA, Osheroff N. Epimerization of Green Tea Catechins during Brewing Does Not Affect the Ability to Poison Human Type II Topoisomerases. *Chem Res Toxicol*. 2013 Apr 4. [Epub ahead of print]. PMID: 23514406.

Boušová I, Hájek J, Dršata J, et al. Naturally occurring flavonoids as inhibitors of purified cytosolic glutathione S-transferase. *Xenobiotica*. 2012 Sep;42(9):872-9. PMID: 22458346.

Cao P, Raleigh DP. Analysis of the inhibition and remodeling of islet amyloid polypeptide amyloid fibers by flavanols. *Biochemistry*. 2012 Apr 3;51(13):2670-83. PMID: 22409724.

Jiang F, Chen W, Yi K, et al. The evaluation of catechins that contain a galloyl moiety as potential HIV-1 integrase inhibitors. *Clin Immunol*. 2010 Dec;137(3):347-56. PMID: 20832370.

Ko CH, Lau KM, Choy WY, et al. Effects of tea catechins, epigallocatechin, galocatechin, and galocatechin gallate, on bone metabolism. *J Agric Food Chem*. 2009 Aug 26;57(16):7293-7. PMID: 19653629.

Caution: This product is intended for laboratory and research use only. It is not for human or drug use.