



LKT Laboratories, Inc.

Fluoxetine Hydrochloride

Phone: 888-558-5227
651-644-8424
Fax: 888-558-7329
Email: getinfo@lktlabs.com
Web: lktlabs.com

Product Information

Product ID F4780
CAS No. 59333-67-4
Chemical Name N-Methyl-γ-[4-(trifluoromethyl)phenoxy]benzene-propanamine hydrochloride

Synonym Adofen, Fluoxeren, Lovan, Prozac, Sarafem

Formula C₁₇H₁₈F₃NO • HCl
Formula Wt. 345.79
Melting Point 158.4-158.9 °C
Purity ≥98%

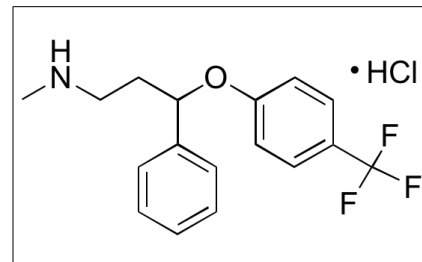
Solubility Soluble in methanol, ethanol, acetone, acetonitrile and chloroform. Water to 10 mM, DMSO to 100 mM. DMF to 16 mg/ml. Ethanol to 60 mg/ml.

Store Temp Ambient

Ship Temp Ambient

Description Fluoxetine is an SSRI most often used to treat mood or psychiatric disorders such as depression, obsessive compulsive disorder, bulimia nervosa, panic disorder, and PTSD. Fluoxetine inhibits 5-HT reuptake acting as an antagonist at 5-HT transporters (SERTs) as well as at 5-HT receptors and σ₁ receptors. Likely related to its antidepressant activities, fluoxetine can prevent cue- and stress-induced reinstatement in animal models of substance abuse. In a clinical setting, fluoxetine increased abstinence rates in former female heroin-dependent subjects when combined with naltrexone compared to naltrexone alone. Additionally, this compound exhibits antiviral activity, demonstrated by its ability to reduce synthesis of coxsackievirus RNA and protein. Fluoxetine also acts as a functional inhibitor of acid sphingomyelinase (FIASMA).

pH value: 5-7 (5% aqueous solution)



Bulk quantities available upon request

Product ID	Size
F4780	1 g
F4780	5 g

References Zuo J, Quinn KK, Kye S, et al. Fluoxetine is a potent inhibitor of coxsackievirus replication. *Antimicrob Agents Chemother.* 2012 Sep;56(9):4838-44. PMID: 22751539.

Apparsundaram S, Stockdale DJ, Henningsen RA, et al. Antidepressants targeting the serotonin reuptake transporter act via a competitive mechanism. *J Pharmacol Exp Ther.* 2008 Dec;327(3):982-90. PMID: 18801947.

Krupitsky EM, Zvartau EE, Masalov DV, et al. Naltrexone with or without fluoxetine for preventing relapse to heroin addiction in St. Petersburg, Russia. *J Subst Abuse Treat.* 2006 Dec;31(4):319-28. PMID: 17084785.

Pälvimäki EP, Roth BL, Majasuo H, et al. Interactions of selective serotonin reuptake inhibitors with the serotonin 5-HT_{2c} receptor. *Psychopharmacology (Berl).* 1996 Aug;126(3):234-40. PMID: 8876023.

Narita N, Hashimoto K, Tomitaka S, et al. Interactions of selective serotonin reuptake inhibitors with subtypes of sigma receptors in rat brain. *Eur J Pharmacol.* 1996 Jun 20;307(1):117-9. PMID: 8831113.

Opal MD, Klenotich SC, Morais M, et al. Serotonin 2C receptor antagonists induce fast-onset antidepressant effects. *Mol Psychiatry.* 2014 Oct;19(10):1106-1114. PMID: 24166413.

Nagano M, Liu M, Inagaki H, et al. Early intervention with fluoxetine reverses abnormalities in the serotonergic system and behavior of rats exposed prenatally to dexamethasone. *Neuropharmacology.* 2012 Aug;63(2):292-300. PMID: 22710353.

Caution: This product is intended for laboratory and research use only. It is not for human or drug use.