



LKT Laboratories, Inc.

Etoricoxib

Phone: 888-558-5227
651-644-8424
Fax: 888-558-7329
Email: getinfo@lctlabs.com
Web: lctlabs.com

Product Information

Product ID E7858

CAS No. 202409-33-4

Chemical Name

Synonym

Formula $C_{18}H_{15}ClN_2O_2S$

Formula Wt. 358.84

Melting Point

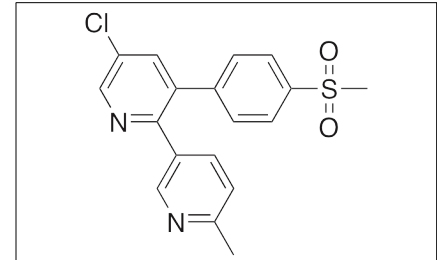
Purity $\geq 99\%$

Solubility freely soluble in methanol, tetrahydrofuran, dimethyl sulfoxide, methyl ethyl ketone, dimethyl formamide, and chloroform. Etoricoxib is soluble

Store Temp Ambient

Ship Temp Ambient

Description Etoricoxib is a non-steroidal anti-inflammatory drug (NSAID) that exhibits anti-inflammatory, analgesic, antioxidative, anticancer, anti-angiogenic, and chemopreventive activities. Etoricoxib inhibits COX-2; it also increases activity of superoxide dismutase, catalase, glutathione reductase, and glutathione transferase in animal models. Etoricoxib downregulates expression of matrix metalloproteinases 2 and 9 (MMP2/9), COX-2, MPC-1, VEGF, and MIP-1B in vivo. In other animal models, etoricoxib decreases aberrant crypt foci and lesion formation, suppressing colon carcinogenesis.



Bulk quantities available upon request

Product ID	Size
E7858	5 mg
E7858	25 mg
E7858	100 mg

References Nadda N, Vaish V, Setia S, et al. Angiostatic role of the selective cyclooxygenase-2 inhibitor etoricoxib (MK0663) in experimental lung cancer. *Biomed Pharmacother.* 2012 Sep;66(6):474-83. PMID: 22681911.

Sharma P, Kaur J, Sanyal SN. Effect of etoricoxib, a cyclooxygenase-2 selective inhibitor on aberrant crypt formation and apoptosis in 1,2 dimethyl hydrazine induced colon carcinogenesis in rat model. *Nutr Hosp.* 2010 Jan-Feb;25(1):39-48. PMID: 20204254.

Kanwar SS, Vaiphei K, Nehru B, et al. Antioxidative effects of nonsteroidal anti-inflammatory drugs during the initiation stages of experimental colon carcinogenesis in rats. *J Environ Pathol Toxicol Oncol.* 2008;27(2):89-100. PMID: 18540845.

Caution: This product is intended for laboratory and research use only. It is not for human or drug use.