

## Product Information

**Product ID** E6783

**CAS No.** 221054-79-1

**Chemical Name** (3R)-3-(4-hydroxyphenyl)-3,4-dihydro-2H-chromen-7-ol

**Synonym** (3R)-3-(4-hydroxyphenyl)-3,4-dihydro-2H-chromen-7-ol

**Formula** C<sub>15</sub>H<sub>14</sub>O<sub>3</sub>

**Formula Wt.** 242.27

**Melting Point**

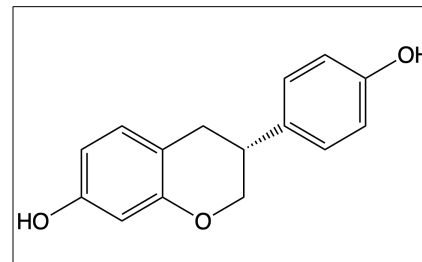
**Purity** ≥98%

**Solubility**

**Store Temp** -20° C

**Ship Temp** Ambient

**Description** R-Equol is the diastereomer of S-Equol. Although S-equol is a naturally occurring isoflavone metabolite in humans, R-equol is not. However, both of these diastereomers are biologically active.



**Bulk quantities available upon request**

**Product ID** **Size**

E6783 5 mg

E6783 25 mg

E6783 100 mg

**References** Lephart E. Resveratrol, 4' acetoxyl resveratrol, R-equol, racemic equol or S-equol as cosmeceuticals to improve dermal health. *Int J Mol Sci.* 2017 Jun 3;18(6):1193. PMID: 28587197

Setchell K, Zhao X, Jha P, et al. The pharmacokinetic behaviors of the soy isoflavone metabolite S-(-)equol and its diastereoisomer R-(+)equol in healthy adults determined by using stable-isotope-labeled tracers. *Am J Clin Nutr.* 2009 Oct;90(4):1029-1037. PMID: 19710188

**Caution:** This product is intended for laboratory and research use only. It is not for human or drug use.