



LKT Laboratories, Inc.

β-Elemene

Phone: 888-558-5227
651-644-8424
Fax: 888-558-7329
Email: getinfo@lktlabs.com
Web: lktlabs.com

Product Information

Product ID E4418

CAS No. 515-13-9

Chemical Name 1S,2S,4R)-1-Methyl-2,4-di(prop-1-en-2-yl)-1-vinylcyclohexane

Synonym

Formula C₁₅H₂₄

Formula Wt. 204.35

Melting Point

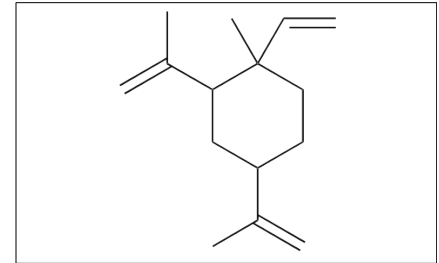
Purity ≥98%

Solubility

Store Temp 4° C

Ship Temp Ambient

Description β-Elemene is a sesquiterpene found in various plant sources. This compound exhibits anti-angiogenic and anticancer chemotherapeutic properties by suppressing Notch-1 and decreasing the expression and phosphorylation of Smad3 and altering TGF-β 1 signaling. β-Elemene also displays anti-inflammatory and immunomodulatory properties, suppressing differentiation of Th17 cells and decreasing levels of IL-17, IL-6, and IL-23 in a mouse model of multiple sclerosis. This compound also induces apoptosis and cell cycle arrest in a wide variety of cancer cell lines.



Bulk quantities available upon request

Product ID	Size
E4418	25 mg
E4418	100 mg
E4418	500 mg

References Yan B, Zhou Y, Feng S, et al. β-Elemene-Attenuated Tumor Angiogenesis by Targeting Notch-1 in Gastric Cancer Stem-Like Cells. *Evid Based Complement Alternat Med.* 2013;2013:268468. PMID: 23710217.

Zhang X, Li Y, Zhang Y, et al. Beta-elemene blocks epithelial-mesenchymal transition in human breast cancer cell line MCF-7 through Smad3-mediated down-regulation of nuclear transcription factors. *PLoS One.* 2013;8(3):e58719. PMID: 23516540.

Dai ZJ, Tang W, Lu WF, et al. Antiproliferative and apoptotic effects of β-elemene on human hepatoma HepG2 cells. *Cancer Cell Int.* 2013 Mar 14;13(1):27. PMID: 23496852.

Zhang R, Tian A, Zhang H, et al. Amelioration of experimental autoimmune encephalomyelitis by β-elemene treatment is associated with Th17 and Treg cell balance. *J Mol Neurosci.* 2011 May;44(1):31-40. PMID: 21246417.

Li QQ, Wang G, Huang F, et al. Antineoplastic effect of beta-elemene on prostate cancer cells and other types of solid tumour cells. *J Pharm Pharmacol.* 2010 Aug;62(8):1018-27. PMID: 20663036.

Caution: This product is intended for laboratory and research use only. It is not for human or drug use.