



LKT Laboratories, Inc.

CK-636

Phone: 888-558-5227

651-644-8424

Fax: 888-558-7329

Email: getinfo@lktlabs.com

Web: lktlabs.com

Product Information

Product ID C4000

CAS No. 442632-72-6

Chemical Name

Synonym CK636, CK-0944636

Formula $C_{16}H_{16}N_2OS$

Formula Wt. 284.38

Melting Point

Purity $\geq 98\%$

Solubility DMSO 57 mg/mL (200.43 mM)

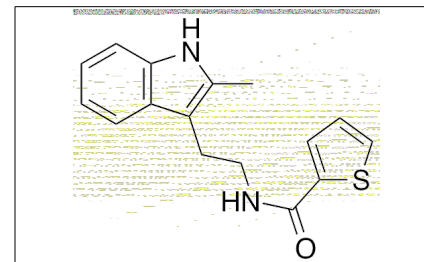
Ethanol 50 mg/mL (175.82 mM)

Water Insoluble

Store Temp $-20^{\circ}C$

Ship Temp Ambient

Description CK-636 is an inhibitor of actin-related protein 2/3 (Arp2/3); it binds between Arp2 and Arp3 to prevent the association of the two into their active conformation, limiting the formation of lamellipodia and cellular movement. CK-636 inhibits the production of tight junctions, cell-cell adhesion, and epidermal differentiation in vitro. This compound is used to study cellular movement and path finding in vitro.



Bulk quantities available upon request

Product ID	Size
C4000	5 mg
C4000	25 mg

References Zhou K, Muroyama A, Underwood J, et al. Actin-related protein2/3 complex regulates tight junctions and terminal differentiation to promote epidermal barrier formation. Proc Natl Acad Sci U S A. 2013 Oct 1;110(40):E3820-9. PMID: 24043783.

Kwon KW, Park H, Doh J. Migration of T cells on surfaces containing complex nanotopography. PLoS One. 2013 Sep 12;8(9):e73960. PMID: 24069255.

Nolen BJ, Tomasevic N, Russell A, et al. Characterization of two classes of small molecule inhibitors of Arp2/3 complex. Nature. 2009 Aug 20;460(7258):1031-4. PMID: 19648907.

Caution: This product is intended for laboratory and research use only. It is not for human or drug use.