



# LKT Laboratories, Inc.

## Cardiogenol C Hydrochloride

Phone: 888-558-5227  
651-644-8424  
Fax: 888-558-7329  
Email: [getinfo@lktlabs.com](mailto:getinfo@lktlabs.com)  
Web: [lktlabs.com](http://lktlabs.com)

### Product Information

**Product ID** C0369

**CAS No.** 671225-39-1

**Chemical Name** 2-({2-[(4-Methoxyphenyl)amino]-4-pyrimidinyl}amino)ethanol hydrochloride

**Synonym**

**Formula** C<sub>13</sub>H<sub>16</sub>N<sub>4</sub>O<sub>2</sub> · HCl

**Formula Wt.** 296.76

**Melting Point**

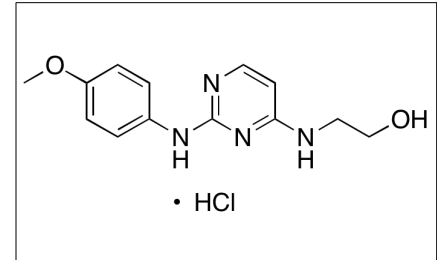
**Purity** ≥98%

**Solubility** 100mM in Water  
100mM in DMSO

**Store Temp** -20° C

**Ship Temp** Ambient

**Description** Cardiogenol C induces cardiomyogenic effects in pluripotent P19 embryonic carcinoma cells. Cardiogenol C also significantly increases atrial natriuretic factor and Nkx2.5 expression and induces expression of cardiac Nav1.5 channels in C2C12 skeletal myoblasts. In multipotent stem cells from murine hair follicles, Cardiogenol C has also been shown to induce transdifferentiation into cardiomyocyte-like cells.



**Bulk quantities available upon request**

Product ID	Size
C0369	1 mg
C0369	5 mg
C0369	25 mg

**References** Mike AK, Koenig X, Koley M, et al. Small molecule cardiogenol C upregulates cardiac markers and induces cardiac functional properties in lineage-committed progenitor cells. *Cell Physiol Biochem*. 2014;33(1):205-221. PMID: 24481283.

Skalova S, Svadlakova T, Qureshi WMS, et al. Induced pluripotent stem cells and their use in cardiac and neural regenerative medicine. *Int J Mol Sci*. 2015 Feb;16(2):4043-4067. PMID: 25689424.

Christ GJ, Saul JM, Furth ME, Andersson KE. The pharmacology of regenerative medicine. *Pharmacol Rev*. 2013 Jul;65(3):1091-1133. PMID: 23818131.

Yau W, Tang MK, Chen E, et al. Cardiogenol C can induce mouse hair bulge progenitor cells to transdifferentiate into cardiomyocyte-like cells. *Proteome Sci*. 2011;9:3. PMID: 21247432.

**Caution:** This product is intended for laboratory and research use only. It is not for human or drug use.