



## Product Information

**Product ID** C016481

**CAS No.** 135531-86-1

**Chemical Name** 2-(1H-indol-3-yl)-1,3-thiazole

**Synonym** 3-(1,3-thiazol-2-yl)-1H-indole, 3-(thiazol-2-yl)indole

**Formula** C<sub>11</sub>H<sub>8</sub>N<sub>2</sub>S

**Formula Wt.** 200.26

**Melting Point** 134-137°C

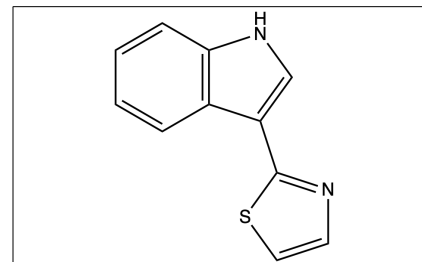
**Purity** ≥98%

**Solubility**

**Store Temp** 4°C

**Ship Temp** Ambient

**Description** Camalexin is a phytoalexin found in various cruciferous plants after exposure to environmental stresses. Studies on acute myeloid leukemia cells show that camalexin selectively decreases cell viability. Several studies have already shown that exposure to camalexin causes cell shrinkage and phospholipid scrambling in the membrane of human erythrocytes. Camalexin treatment of prostate cancer cells indicate that camalexin may be more potent toward the more aggressive strain of cells C4-2 as versus the less aggressive strain LNCaP.



## Pricing and Availability

**Bulk quantities available upon request**

Product ID	Size
C016481	5 mg
C016481	25 mg
C016481	100 mg
C016481	250 mg

**References** Yang Y, Wang G, Wu W, et al. Camalexin induce apoptosis via the ROS-ER stress-mitochondrial apoptosis pathway in AML cells. *Oxid Med Cell Longev*. 2018 Nov 14;2018:7426950. PMID: 30538806.

Almasry M, Jemaa M, Mischitelli M, et al. Camalexin-induced cell membrane scrambling and cell shrinkage in human erythrocytes. *Cell Physiol Biochem*. 2017;41(2):731-741. PMID: 28222420.

Smith B, Randle D, Mezencev R, et al. Camalexin-induced apoptosis in prostate cancer cells involves alterations of expression and activity of lysosomal protease cathepsin D. *Molecules*. 2014 Apr 2;19(4):3988-4005. PMID: 24699144.

Smith B, Neal C, Chetram M, et al. The phytoalexin camalexin mediates cytotoxicity towards aggressive prostate cancer cells via reactive oxygen species. *J Nat Med*. 2013 Jul;67(3):607-618. PMID: 23179315.

**Caution:** This product is intended for laboratory and research use only. It is not for human or drug use.