



LKT Laboratories, Inc.

Betamethasone 21-Phosphate Sodium

Phone: 888-558-5227

651-644-8424

Fax: 888-558-7329

Email: getinfo@lktlabs.com

Web: lktlabs.com

Product Information

Product ID B1878

CAS No. 151-73-5

Chemical Name (11B,16B)-9-Fluoro-11,17,21-trihydroxy-16-methylpregna-1,4-diene-3,20-dione 21-phosphate disodium salt

Synonym Betamethasone 21-Phosphate disodium salt, Bentelan, Betnesol, Celestan, Vista-Methasone

Formula C₂₂H₂₈FN₂O₈P

Formula Wt. 516.40

Melting Point

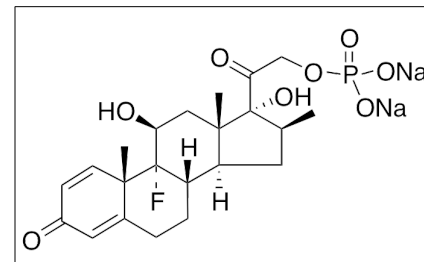
Purity ≥98%

Solubility Soluble in water (500 mg/mL). Slightly soluble in alcohol (2 mg/mL). Insoluble in chloroform.

Store Temp Ambient

Ship Temp Ambient

Description Betamethasone is a glucocorticoid receptor agonist that exhibits anti-inflammatory, immunosuppressive, and anti-ulcerative activities. Betamethasone is clinically used to treat skin irritations such as psoriasis and to accelerate preterm fetal lung development.



Bulk quantities available upon request

Product ID **Size**

B1878 50 mg

B1878 250 mg

B1878 1 g

References Shepherd J, Taheri A, Feldman SR. Once-daily topical treatment for psoriasis: calcipotriene + betamethasone two-compound topical formulation. *Clin Cosmet Investig Dermatol*. 2013 Dec 19;7:19-22. PMID: 24379688.

Waffarn F, Davis EP. Effects of antenatal corticosteroids on the hypothalamic-pituitary-adrenocortical axis of the fetus and newborn: experimental findings and clinical considerations. *Am J Obstet Gynecol*. 2012 Dec;207(6):446-54. PMID: 22840973.

Caution: This product is intended for laboratory and research use only. It is not for human or drug use.