



LKT Laboratories, Inc.

## Adapalene

Phone: 888-558-5227  
651-644-8424  
Fax: 888-558-7329  
Email: [getinfo@lktlabs.com](mailto:getinfo@lktlabs.com)  
Web: [lktlabs.com](http://lktlabs.com)

### Product Information

Product ID A1202

CAS No. 106685-40-9

Chemical Name

Synonym

Formula  $C_{28}H_{28}O_3$

Formula Wt. 412.52

Melting Point 319-322C

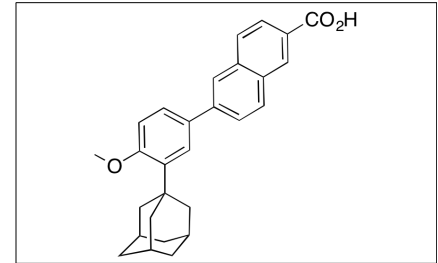
Purity  $\geq 98\%$

Solubility

Store Temp Ambient

Ship Temp Ambient

**Description** Adapalene is a derivative of tretinoin that is clinically used to treat acne and pityriasis versicolor. This synthetic retinoid exhibits anti-inflammatory activity, decreasing expression of Ki67,  $\alpha 2$ -integrin,  $\alpha 6$ -integrin, toll-like receptor 2 (TLR2), IL-8, and B-defensin in ex vivo models. Like other retinoids, adapalene also activates retinoic acid receptors RAR $\alpha$ /B/ $\gamma$  across several models.



**Bulk quantities available upon request**

Product ID	Size
A1202	100 mg
A1202	250 mg
A1202	1 g

**References** Tirado-Sánchez A, Espíndola YS, Ponce-Oliviera RM, et al. Efficacy and safety of adapalene gel 0.1% and 0.3% and tretinoin gel 0.05% for acne vulgaris: results of a single-center, randomized, double-blinded, placebo-controlled clinical trial on Mexican patients (skin type III-IV). *J Cosmet Dermatol.* 2013 Jun;12(2):103-7. PMID: 23725303.

Shi TW, Ren XK, Yu HX, et al. Roles of adapalene in the treatment of pityriasis versicolor. *Dermatology.* 2012;224(2):184-8. PMID: 22572567.

Zuliani T, Khammari A, Chaussy H, et al. Ex vivo demonstration of a synergistic effect of Adapalene and benzoyl peroxide on inflammatory acne lesions. *Exp Dermatol.* 2011 Oct;20(10):850-3. PMID: 21793939.

Michel S, Jomard A, Démarchez M. Pharmacology of adapalene. *Br J Dermatol.* 1998 Oct;139 Suppl 52:3-7. PMID: 9990413.

Bernard BA. Adapalene, a new chemical entity with retinoid activity. *Skin Pharmacol.* 1993;6 Suppl 1:61-9. PMID: 8142113.

**Caution:** This product is intended for laboratory and research use only. It is not for human or drug use.