

Rat CRP AccuSignal ELISA Kit - KOA0606

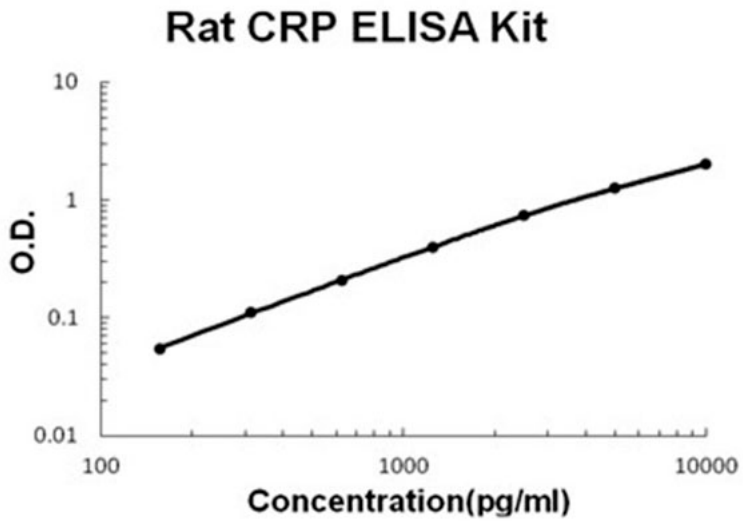
Code: KOA0606

Size: 1 Kit

Product Description: Rat CRP AccuSignal ELISA Kit - KOA0606

PhysicalState:

| | | | | | | | | | |
|-------------------------------|---|--------|---|--------|--|--------|---|-------------|---|
| Label | Unconjugated | | | | | | | | |
| Gene Name | CRP | | | | | | | | |
| Species Reactivity | Rat | | | | | | | | |
| Storage Condition | Store vials at 4°C prior to opening. Centrifuge product if not completely clear after standing at room temperature. This product is stable for 6 months at 4°C as an undiluted liquid. Dilute only prior to immediate use. For extended storage freeze at -20°C or below for 12 months. Avoid cycles of freezing and thawing. | | | | | | | | |
| Synonyms | C reactive protein pentraxin related, C-reactive protein, C-reactive protein(1-205), CRP, CRP_HUMAN, MGC149895, MGC88244, Pentraxin 1, Pentraxin 1 short, PTX 1, PTX1 | | | | | | | | |
| Application Note | Useful in Sandwich ELISA for Quantitative Detection of Antigen. Aliquot 0.1ml per well of the 10000pg/ml, 5000pg/ml, 2500pg/ml, 1250pg/ml, 625pg/ml, 312pg/ml, 156pg/ml rat CRP standard solutions into the precoated 96-well plate. Add 0.1ml of the sample diluent buffer into the control well (Zero well). Add 0.1ml of each properly diluted sample of rat cell culture supernates, serum or plasma(heparin, EDTA) to each empty well. It is recommended that each rat CRP standard solution and each sample be measured in duplicate. | | | | | | | | |
| Background | C Reactive Protein(CRP) is a major acute phase reactant synthesized primarily in the liver hepatocytes. It is composed of 5 identical, 21,500-molecular weight subunits. CRP mediates activities associated with preimmune nonspecific host resistance. CRP shows the strongest association with cardiovascular events. It is detectable on the surface of about 4% of normal peripheral blood lymphocytes. Acute phase reactant CRP is produced in the liver. | | | | | | | | |
| Purity And Specificity | Natural and recombinant rat CRP. There is no detectable cross-reactivity with other relevant proteins. | | | | | | | | |
| ELISA | 156pg/ml-10000pg/ml | | | | | | | | |
| Expiration | See kit insert for complete instructions. | | | | | | | | |
| Immunogen | Expression system for standard: NSO; Immunogen sequence: H20-S230 | | | | | | | | |
| Anti-Coagulant | Heparin Sodium | | | | | | | | |
| Related Products | <table border="0"> <tr> <td>MB-008</td> <td>10X PBS pH 7.2 (0.2 M Potassium Phosphate 1.5 M Sodium Chloride) - MB-008</td> </tr> <tr> <td>MB-012</td> <td>10X TBS pH 7.5 (1.0 M Tris HCl 1.5 M Sodium Chloride) - MB-012</td> </tr> <tr> <td>MB-013</td> <td>10X TTBS pH 7.5 (1.0 M Tris HCl 1.5 M Sodium Chloride 0.1% (w/v) Tween-20) - MB-013</td> </tr> <tr> <td>MB-075-1000</td> <td>10X PBST (0.2 M Potassium Phosphate 1.5 M Sodium Chloride, 0.5% (v/v) Tween-20, pH 7.2) - MB-075-1000</td> </tr> </table> | MB-008 | 10X PBS pH 7.2 (0.2 M Potassium Phosphate 1.5 M Sodium Chloride) - MB-008 | MB-012 | 10X TBS pH 7.5 (1.0 M Tris HCl 1.5 M Sodium Chloride) - MB-012 | MB-013 | 10X TTBS pH 7.5 (1.0 M Tris HCl 1.5 M Sodium Chloride 0.1% (w/v) Tween-20) - MB-013 | MB-075-1000 | 10X PBST (0.2 M Potassium Phosphate 1.5 M Sodium Chloride, 0.5% (v/v) Tween-20, pH 7.2) - MB-075-1000 |
| MB-008 | 10X PBS pH 7.2 (0.2 M Potassium Phosphate 1.5 M Sodium Chloride) - MB-008 | | | | | | | | |
| MB-012 | 10X TBS pH 7.5 (1.0 M Tris HCl 1.5 M Sodium Chloride) - MB-012 | | | | | | | | |
| MB-013 | 10X TTBS pH 7.5 (1.0 M Tris HCl 1.5 M Sodium Chloride 0.1% (w/v) Tween-20) - MB-013 | | | | | | | | |
| MB-075-1000 | 10X PBST (0.2 M Potassium Phosphate 1.5 M Sodium Chloride, 0.5% (v/v) Tween-20, pH 7.2) - MB-075-1000 | | | | | | | | |
| Related Links | <p>UniProtKB - P48199</p> <p>http://www.uniprot.org/uniprot/P48199</p> <p>NCBI - NP_058792.1 http://www.ncbi.nlm.nih.gov/protein/NP_058792.1</p> <p>GeneID - 25419</p> <p>http://www.ncbi.nlm.nih.gov/sites/entrez?db=gene&term=25419</p> <p>KOA0606 Protocol http://www.rockland-inc.com/uploadedfiles/Support/KOA0606-TEB.pdf</p> | | | | | | | | |



Disclaimer

This product is for research use only and is not intended for therapeutic or diagnostic applications. Please contact a technical service representative for more information. All products of animal origin manufactured by Rockland Immunochemicals are derived from starting materials of North American origin. Collection was performed in United States Department of Agriculture (USDA) inspected facilities and all materials have been inspected and certified to be free of disease and suitable for exportation. All properties listed are typical characteristics and are not specifications. All suggestions and data are offered in good faith but without guarantee as conditions and methods of use of our products are beyond our control. All claims must be made within 30 days following the date of delivery. The prospective user must determine the suitability of our materials before adopting them on a commercial scale. Suggested uses of our products are not recommendations to use our products in violation of any patent or as a license under any patent of Rockland Immunochemicals, Inc. If you require a commercial license to use this material and do not have one, then return this material, unopened to: Rockland Inc., P.O. BOX 5199, Limerick, Pennsylvania, USA.