

Human Nidogen-1/Entactin/NID-1 AccuSignal ELISA Kit - KOA0517

Code: KOA0517

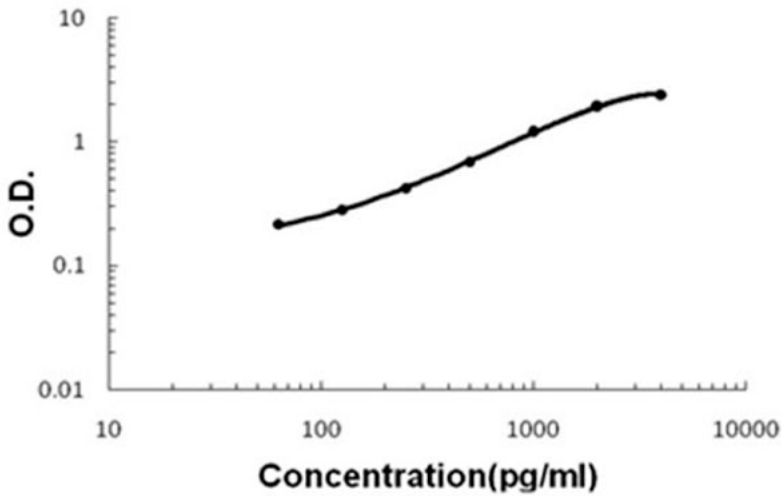
Size: 1 Kit

Product Description: Human Nidogen-1/Entactin/NID-1 AccuSignal ELISA Kit - KOA0517

PhysicalState:

Label	Unconjugated
Gene Name	NID1
Species Reactivity	Human
Storage Condition	Store vials at 4°C prior to opening. Centrifuge product if not completely clear after standing at room temperature. This product is stable for 6 months at 4°C as an undiluted liquid. Dilute only prior to immediate use. For extended storage freeze at -20°C or below for 12 months. Avoid cycles of freezing and thawing.
Synonyms	Entactin, NID-1, Nid1, NID1_HUMAN, Nidogen-1
Application Note	Useful in Sandwich ELISA for Quantitative Detection of Antigen. Aliquot 0.1ml per well of the 4000pg/ml, 2000pg/ml, 1000pg/ml, 500pg/ml, 250pg/ml, 125pg/ml, 62.5pg/ml human Nidogen-1 standard solutions into the precoated 96-well plate. Add 0.1ml of the sample diluent buffer into the control well (Zero well). Add 0.1ml of each properly diluted sample of human cell culture supernates or serum to each empty well. It is recommended that each human Nidogen-1 standard solution and each sample be measured in duplicate.
Background	Nidogen-1(NID-1), also known as Entactin, is a protein that in humans is encoded by the NID1 gene. It is a member of the nidogen family of basement membrane glycoproteins. This gene is mapped to 1q42.3. Nidogen-1 is a component of the basement membrane alongside other components such as collagen type IV, proteoglycans(heparan sulfate and glycosaminoglycans), laminin and fibronectin. The protein interacts with several other components of basement membranes. Structurally it(along with perlecan) connects the networks formed by collagens and laminins to each other. It may also play a role in cell interactions with the extracellular matrix. Nidogen-1 also can serve as a bridge between the 2 most abundant molecules in the basement membrane: type IV collagen and laminin.
Purity And Specificity	Natural and recombinant human Nidogen-1. There is no detectable cross-reactivity with other relevant proteins.
ELISA	62.5pg/ml-4000pg/ml
Expiration	See kit insert for complete instructions.
Immunogen	Expression system for standard: NSO; Immunogen sequence: L29-K1114
Related Products	
MB-008	10X PBS pH 7.2 (0.2 M Potassium Phosphate 1.5 M Sodium Chloride) - MB-008
MB-012	10X TBS pH 7.5 (1.0 M Tris HCl 1.5 M Sodium Chloride) - MB-012
MB-013	10X TTBS pH 7.5 (1.0 M Tris HCl 1.5 M Sodium Chloride 0.1% (w/v) Tween-20) - MB-013
MB-075-1000	10X PBST (0.2 M Potassium Phosphate 1.5 M Sodium Chloride, 0.5% (v/v) Tween-20, pH 7.2) - MB-075-1000
Related Links	
	UniProtKB - P14543
	http://www.uniprot.org/uniprot/P14543
	NCBI - http://www.ncbi.nlm.nih.gov/protein/NP_002499.2
	GeneID - 4811
	http://www.ncbi.nlm.nih.gov/sites/entrez?db=gene&term=4811
	KOA0517 Protocol http://www.rockland-inc.com/uploadedfiles/Support/KOA0517-%20SZ.pdf

Human Nidogen-1 ELISA Kit



Disclaimer

This product is for research use only and is not intended for therapeutic or diagnostic applications. Please contact a technical service representative for more information. All products of animal origin manufactured by Rockland Immunochemicals are derived from starting materials of North American origin. Collection was performed in United States Department of Agriculture (USDA) inspected facilities and all materials have been inspected and certified to be free of disease and suitable for exportation. All properties listed are typical characteristics and are not specifications. All suggestions and data are offered in good faith but without guarantee as conditions and methods of use of our products are beyond our control. All claims must be made within 30 days following the date of delivery. The prospective user must determine the suitability of our materials before adopting them on a commercial scale. Suggested uses of our products are not recommendations to use our products in violation of any patent or as a license under any patent of Rockland Immunochemicals, Inc. If you require a commercial license to use this material and do not have one, then return this material, unopened to: Rockland Inc., P.O. BOX 5199, Limerick, Pennsylvania, USA.