

Mouse LOX-1/OLR1 AccuSignal ELISA Kit - KOA0493
Code: KOA0493

Size: 1 Kit

Product Description: Mouse LOX-1/OLR1 AccuSignal ELISA Kit - KOA0493

PhysicalState:

Label	Unconjugated
Gene Name	OLR1
Species Reactivity	Mouse
Storage Condition	Store vials at 4°C prior to opening. Centrifuge product if not completely clear after standing at room temperature. This product is stable for 6 months at 4°C as an undiluted liquid. Dilute only prior to immediate use. For extended storage freeze at -20°C or below for 12 months. Avoid cycles of freezing and thawing.
Synonyms	C-type lectin domain family 8 member A, CLEC8A, hLOX-1, Lectin-like oxidized LDL receptor 1, Lectin-like oxLDL receptor 1, Lectin-type oxidized LDL receptor 1, LOX-1, LOXIN, Olr1, OLR1_HUMAN, Ox-LDL receptor 1, Oxidized low density lipoprotein (lectin like) receptor 1, Oxidized low density lipoprotein receptor 1 soluble form, Oxidized low-density lipoprotein receptor 1, SCARE1, Scavenger receptor class E member 1, SLOX1
Application Note	Useful in Sandwich ELISA for Quantitative Detection of Antigen. Aliquot 0.1ml per well of the 2000pg/ml, 1000pg/ml, 500pg/ml, 250pg/ml, 125pg/ml, 62.5pg/ml, 31.2pg/ml mouse LOX-1 standard solutions into the precoated 96-well plate. Add 0.1ml of the sample diluent buffer into the control well (Zero well). Add 0.1ml of each properly diluted sample of mouse cell culture supernates, serum or plasma(heparin, EDTA) to each empty well. It is recommended that each mouse LOX-1 standard solution and each sample be measured in duplicate.
Background	Oxidized low-density lipoprotein receptor 1(Ox-LDL receptor 1) also known as lectin-type oxidized LDL receptor 1(LOX-1) is a protein that in humans is encoded by the OLR1 gene. It belongs to the C-type lectin superfamily. The LOX1 gene is mapped to to 12p13-p12. The protein has got the amino acids of 363. It can be detected in various tissues, highly expressed in placenta. This protein may be involved in the regulation of Fas-induced apoptosis and play a role as a scavenger receptor. The standards of this kit are recombinant mouse LOX-1 (R60-I363), with molecular weight of 36.3kDa.
Purity And Specificity	Natural and recombinant mouse LOX-1. There is no detectable cross-reactivity with other relevant proteins.
ELISA	31.2pg/ml-2000pg/ml
Expiration	See kit insert for complete instructions.
Immunogen	Expression system for standard: NSO; Immunogen sequence: R60-I363
Anti-Coagulant	Heparin Sodium

Related Products

MB-008	10X PBS pH 7.2 (0.2 M Potassium Phosphate 1.5 M Sodium Chloride) - MB-008
MB-012	10X TBS pH 7.5 (1.0 M Tris HCl 1.5 M Sodium Chloride) - MB-012
MB-013	10X TTBS pH 7.5 (1.0 M Tris HCl 1.5 M Sodium Chloride 0.1% (w/v) Tween-20) - MB-013
MB-075-1000	10X PBST (0.2 M Potassium Phosphate 1.5 M Sodium Chloride, 0.5% (v/v) Tween-20, pH 7.2) - MB-075-1000

Related Links

UniProtKB - Q9EQ09

<http://www.uniprot.org/uniprot/Q9EQ09>

 NCBI - http://www.ncbi.nlm.nih.gov/protein/NP_619589.2

GeneID - 108078

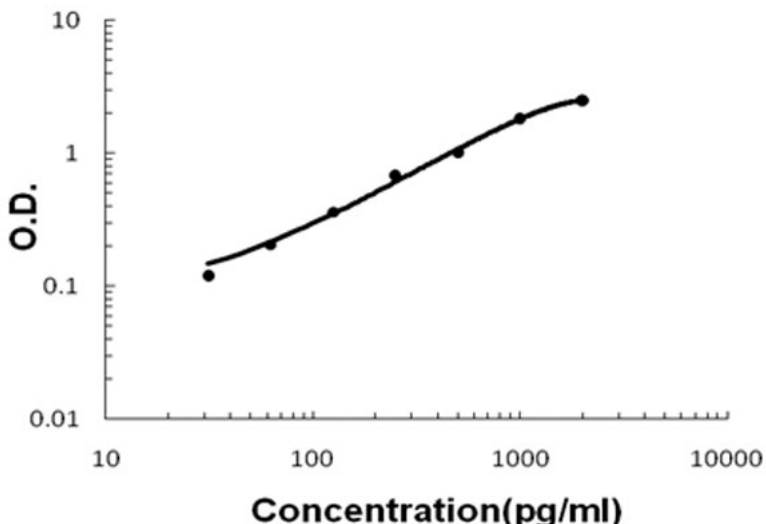
<http://www.ncbi.nlm.nih.gov/sites/entrez?db=gene&term=108078>

Images

1

Mouse LOX-1/OLR1 AccuSignal ELISA Kit standard curve. Assay Range: 31.2pg/ml-2000pg/ml. Sensitivity: <1pg/ml.

Mouse LOX-1 ELISA Kit



Disclaimer

This product is for research use only and is not intended for therapeutic or diagnostic applications. Please contact a technical service representative for more information. All products of animal origin manufactured by Rockland Immunochemicals are derived from starting materials of North American origin. Collection was performed in United States Department of Agriculture (USDA) inspected facilities and all materials have been inspected and certified to be free of disease and suitable for exportation. All properties listed are typical characteristics and are not specifications. All suggestions and data are offered in good faith but without guarantee as conditions and methods of use of our products are beyond our control. All claims must be made within 30 days following the date of delivery. The prospective user must determine the suitability of our materials before adopting them on a commercial scale. Suggested uses of our products are not recommendations to use our products in violation of any patent or as a license under any patent of Rockland Immunochemicals, Inc. If you require a commercial license to use this material and do not have one, then return this material, unopened to: Rockland Inc., P.O. BOX 5199, Limerick, Pennsylvania, USA.