

Human MBP-C/MBL2 AccuSignal ELISA Kit - KOA0476

Code: KOA0476

Size: 1 Kit

Product Description: Human MBP-C/MBL2 AccuSignal ELISA Kit - KOA0476

PhysicalState:

Label	Unconjugated
Gene Name	MBL2
Species Reactivity	Human
Storage Condition	Store vials at 4°C prior to opening. Centrifuge product if not completely clear after standing at room temperature. This product is stable for 6 months at 4°C as an undiluted liquid. Dilute only prior to immediate use. For extended storage freeze at -20°C or below for 12 months. Avoid cycles of freezing and thawing.
Synonyms	COLEC1, Collectin-1, Lectin mannose-binding soluble 2, Mannan binding lectin, Mannan binding protein, Mannose binding lectin 2 soluble, Mannose binding lectin 2 soluble, Mannose binding lectin, Mannose binding lectin protein C2 soluble opsonic defect, Mannose binding protein, Mannose binding protein C, Mannose binding protein C precursor, Mannose-binding lectin, MBL, MBL2_HUMAN, MBL2D, MBP 1, MBP, MBP1, MBPB, MBPC, MBPD, Opsonic defect, protein C, Soluble mannose binding lectin
Application Note	Useful in Sandwich ELISA for Quantitative Detection of Antigen. Aliquot 0.1ml per well of the 20000pg/ml, 10000pg/ml, 5000pg/ml, 2500pg/ml, 1250pg/ml, 625pg/ml, 312pg/ml human MBP-C standard solutions into the precoated 96-well plate. Add 0.1ml of the sample diluent buffer into the control well (Zero well). Add 0.1ml of each properly diluted sample of human cell culture supernates, serum or plasma (heparin, EDTA) to each empty well. It is recommended that each human MBP-C standard solution and each sample be measured in duplicate.
Background	MBL2, also called mannose-binding lectin (protein C) 2, soluble or Mannose-binding lectin (MBL) is a lectin that is instrumental in innate immunity. MBL2 is mapped to chromosome 10q11.2-q21. It belongs to the class of collectins in the C-type lectin superfamily, whose function appears to be pattern recognition in the first line of defense in the pre-immune host. MBL2 recognizes carbohydrate patterns, found on the surface of a large number of pathogenic micro-organisms, including bacteria, viruses, protozoa and fungi. Binding MBL2 to a micro-organism results in activation of the lectin pathway of the complement system. Another important function of MBL2 is that this molecule binds senescent and apoptotic cells and enhances engulfment of whole, intact apoptotic cells, as well as cell debris by phagocytes.
Purity And Specificity	Natural and recombinant human MBP-C. There is no detectable cross-reactivity with other relevant proteins.
ELISA	312pg/ml-20000pg/ml
Expiration	See kit insert for complete instructions.
Immunogen	Expression system for standard: NSO; Immunogen sequence: E21-I248
Anti-Coagulant	Heparin Sodium

Related Products

MB-008	10X PBS pH 7.2 (0.2 M Potassium Phosphate 1.5 M Sodium Chloride) - MB-008
MB-012	10X TBS pH 7.5 (1.0 M Tris HCl 1.5 M Sodium Chloride) - MB-012
MB-013	10X TTBS pH 7.5 (1.0 M Tris HCl 1.5 M Sodium Chloride 0.1% (w/v) Tween-20) - MB-013
MB-075-1000	10X PBST (0.2 M Potassium Phosphate 1.5 M Sodium Chloride, 0.5% (v/v) Tween-20, pH 7.2) - MB-075-1000

Related Links

UniProtKB - P11226

<http://www.uniprot.org/uniprot/P11226>

 NCBI - http://www.ncbi.nlm.nih.gov/protein/NP_000233.1

GeneID - 4153

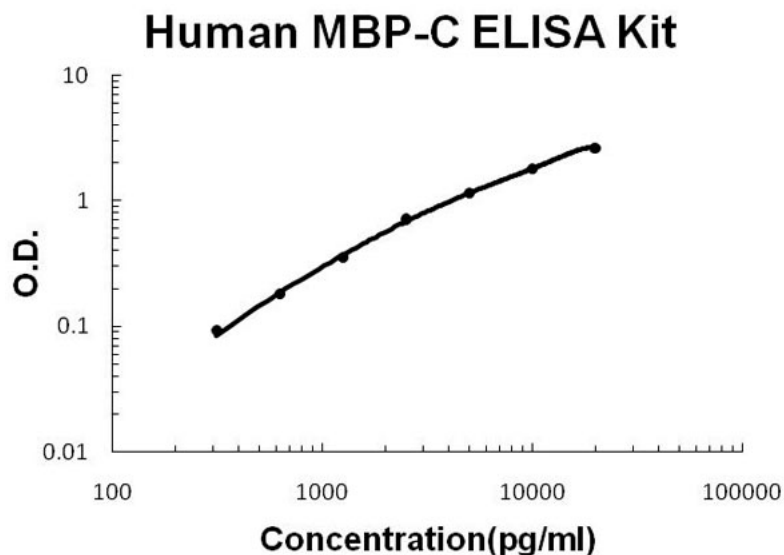
<http://www.ncbi.nlm.nih.gov/sites/entrez?db=gene&term=4153>

KOA0476 Protocol [http://www.rockland-inc.com/uploadedfiles/Support/KOA0476%20\(AZP\).pdf](http://www.rockland-inc.com/uploadedfiles/Support/KOA0476%20(AZP).pdf)

Images

1

Human MBP-C/MBL2 AccuSignal ELISA Kit standard curve.
Assay Range: 312pg/ml-20000pg/ml. Sensitivity: <10pg/ml.



Disclaimer

This product is for research use only and is not intended for therapeutic or diagnostic applications. Please contact a technical service representative for more information. All products of animal origin manufactured by Rockland Immunochemicals are derived from starting materials of North American origin. Collection was performed in United States Department of Agriculture (USDA) inspected facilities and all materials have been inspected and certified to be free of disease and suitable for exportation. All properties listed are typical characteristics and are not specifications. All suggestions and data are offered in good faith but without guarantee as conditions and methods of use of our products are beyond our control. All claims must be made within 30 days following the date of delivery. The prospective user must determine the suitability of our materials before adopting them on a commercial scale. Suggested uses of our products are not recommendations to use our products in violation of any patent or as a license under any patent of Rockland Immunochemicals, Inc. If you require a commercial license to use this material and do not have one, then return this material, unopened to: Rockland Inc., P.O. BOX 5199, Limerick, Pennsylvania, USA.