

**Mouse IL-17D AccuSignal ELISA Kit - KOA0467**
**Code:** KOA0467

**Size:** 1 Kit

**Product Description:** Mouse IL-17D AccuSignal ELISA Kit - KOA0467

**PhysicalState:**

<b>Label</b>	Unconjugated
<b>Gene Name</b>	IL17D
<b>Species Reactivity</b>	Mouse
<b>Storage Condition</b>	Store vials at 4°C prior to opening. Centrifuge product if not completely clear after standing at room temperature. This product is stable for 6 months at 4°C as an undiluted liquid. Dilute only prior to immediate use. For extended storage freeze at -20°C or below for 12 months. Avoid cycles of freezing and thawing.
<b>Synonyms</b>	IL 17D, IL 22, IL 27, IL-17D, IL-27, IL17D, IL17D_HUMAN, IL27, Interleukin 17D, Interleukin 27, Interleukin-17D, Interleukin-27
<b>Application Note</b>	Useful in Sandwich ELISA for Quantitative Detection of Antigen. Aliquot 0.1ml per well of the 4000pg/ml, 2000pg/ml, 1000pg/ml, 500pg/ml, 250pg/ml, 125pg/ml, 62.5pg/ml mouse IL-17D standard solutions into the precoated 96-well plate. Add 0.1ml of the sample diluent buffer into the control well (Zero well). Add 0.1ml of each properly diluted sample of mouse cell culture supernates, serum or plasma (heparin, EDTA) to each empty well. It is recommended that each mouse IL-17D standard solution and each sample be measured in duplicate.
<b>Background</b>	Interleukin 17D (IL-17D) is a member of the unique IL-17 family, which share a conserved cysteine motif. It is mapped to 13q12.11. IL-17D regulates cytokine production in endothelial cells and inhibits hemopoiesis in vitro. Purified recombinant IL-17D inhibited myeloid progenitor cell colony formation. IL-17D can enhance endothelial cell production of IL6, IL8, and GM-CSF, but not other cytokines. And it is preferentially expressed in skeletal muscle, brain, adipose tissue, heart, lung, and pancreas.
<b>Purity And Specificity</b>	Natural and recombinant mouse IL-17D. There is no detectable cross-reactivity with other relevant proteins.
<b>ELISA</b>	62.5pg/ml-4000pg/ml
<b>Expiration</b>	See kit insert for complete instructions.
<b>Immunogen</b>	Expression system for standard: E.coli; Immunogen sequence: A25-R205
<b>Anti-Coagulant</b>	Heparin Sodium

**Related Products**

MB-008	10X PBS pH 7.2 (0.2 M Potassium Phosphate 1.5 M Sodium Chloride) - MB-008
MB-012	10X TBS pH 7.5 (1.0 M Tris HCl 1.5 M Sodium Chloride) - MB-012
MB-013	10X TTBS pH 7.5 (1.0 M Tris HCl 1.5 M Sodium Chloride 0.1% (w/v) Tween-20) - MB-013
MB-075-1000	10X PBST (0.2 M Potassium Phosphate 1.5 M Sodium Chloride, 0.5% (v/v) Tween-20, pH 7.2) - MB-075-1000

**Related Links**

UniProtKB - Q8K4C4

<http://www.uniprot.org/uniprot/Q8K4C4>

 NCBI - [http://www.ncbi.nlm.nih.gov/protein/NP\\_665836.2](http://www.ncbi.nlm.nih.gov/protein/NP_665836.2)

GeneID - 239114

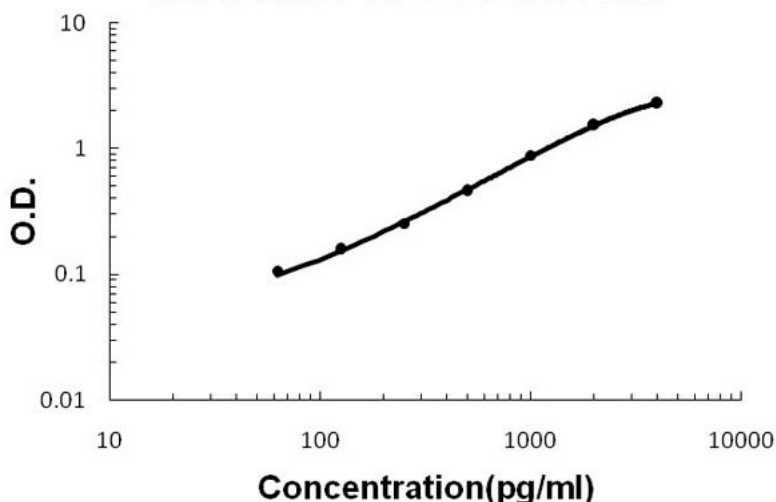
<http://www.ncbi.nlm.nih.gov/sites/entrez?db=gene&term=239114>

Images

1

Mouse IL-17D AccuSignal ELISA Kit standard curve. Assay Range: 62.5pg/ml-4000pg/ml. Sensitivity: <10pg/ml.

### Mouse IL-17D ELISA Kit



**Disclaimer**

This product is for research use only and is not intended for therapeutic or diagnostic applications. Please contact a technical service representative for more information. All products of animal origin manufactured by Rockland Immunochemicals are derived from starting materials of North American origin. Collection was performed in United States Department of Agriculture (USDA) inspected facilities and all materials have been inspected and certified to be free of disease and suitable for exportation. All properties listed are typical characteristics and are not specifications. All suggestions and data are offered in good faith but without guarantee as conditions and methods of use of our products are beyond our control. All claims must be made within 30 days following the date of delivery. The prospective user must determine the suitability of our materials before adopting them on a commercial scale. Suggested uses of our products are not recommendations to use our products in violation of any patent or as a license under any patent of Rockland Immunochemicals, Inc. If you require a commercial license to use this material and do not have one, then return this material, unopened to: Rockland Inc., P.O. BOX 5199, Limerick, Pennsylvania, USA.