

Human IGF1R AccuSignal ELISA Kit - KOA0457

Code: KOA0457

Size: 1 Kit

Product Description: Human IGF1R AccuSignal ELISA Kit - KOA0457

PhysicalState:

Label	Unconjugated
Gene Name	IGF1R
Species Reactivity	Human
Storage Condition	Store vials at 4°C prior to opening. Centrifuge product if not completely clear after standing at room temperature. This product is stable for 6 months at 4°C as an undiluted liquid. Dilute only prior to immediate use. For extended storage freeze at -20°C or below for 12 months. Avoid cycles of freezing and thawing.
Synonyms	CD221, IGF 1R, IGF I receptor, IGF-I receptor, Igf1r, IGF1R_HUMAN, IGFI, IGFR, Insulin like growth factor 1 receptor, Insulin like growth factor I receptor, Insulin-like growth factor 1 receptor beta chain, Insulin-like growth factor I receptor, JTK13, MGC142170, MGC142172, MGC18216
Application Note	Useful in Sandwich ELISA for Quantitative Detection of Antigen. Aliquot 0.1ml per well of the 10000pg/ml, 5000pg/ml, 2500pg/ml, 1250pg/ml, 625pg/ml, 312pg/ml, 156pg/ml human IGF1R standard solutions into the precoated 96-well plate. Add 0.1ml of the sample diluent buffer into the control well (Zero well). Add 0.1ml of each properly diluted sample of human cell culture supernates, serum or plasma (heparin, EDTA) to each empty well. It is recommended that each human IGF1R standard solution and each sample be measured in duplicate.
Background	IGF1R, also called IGFR or insulin-like growth factor 1 receptor, is a protein that found on the surface of human cells. This gene is mapped to 15q26.3. IGF1R belongs to the large class of tyrosine kinase receptors. This receptor mediates the effects of IGF-1, which is a polypeptide protein hormone similar in molecular structure to insulin. It plays an important role in growth and continues to have anabolic effects in adults - meaning that it can induce hypertrophy of skeletal muscle and other target tissues. IGF1R also plays a critical role in transformation events. It is highly overexpressed in most malignant tissues where it functions as an anti-apoptotic agent by enhancing cell survival.
Purity And Specificity	Natural and recombinant human IGF1R. There is no detectable cross-reactivity with other relevant proteins.
ELISA	156pg/ml-10000pg/ml
Expiration	See kit insert for complete instructions.
Immunogen	Expression system for standard: NSO; Immunogen sequence: E31-N932
Anti-Coagulant	Heparin Sodium

Related Products

MB-008	10X PBS pH 7.2 (0.2 M Potassium Phosphate 1.5 M Sodium Chloride) - MB-008
MB-012	10X TBS pH 7.5 (1.0 M Tris HCl 1.5 M Sodium Chloride) - MB-012
MB-013	10X TTBS pH 7.5 (1.0 M Tris HCl 1.5 M Sodium Chloride 0.1% (w/v) Tween-20) - MB-013
MB-075-1000	10X PBST (0.2 M Potassium Phosphate 1.5 M Sodium Chloride, 0.5% (v/v) Tween-20, pH 7.2) - MB-075-1000

Related Links

UniProtKB - P08069

<http://www.uniprot.org/uniprot/P08069>

 NCBI - http://www.ncbi.nlm.nih.gov/protein/NP_000866.1
 NP_000866.1

GeneID - 3480

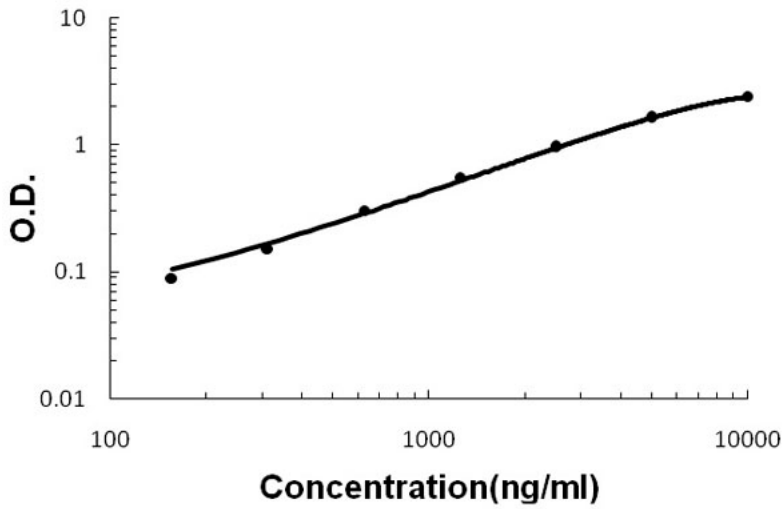
<http://www.ncbi.nlm.nih.gov/sites/entrez?db=gene&term=3480>

Images

1

Human IGF1R AccuSignal ELISA Kit standard curve.
Assay Range: 156pg/ml-10000pg/ml. Sensitivity: <10pg/ml.

Human IGF1R ELISA Kit



Disclaimer

This product is for research use only and is not intended for therapeutic or diagnostic applications. Please contact a technical service representative for more information. All products of animal origin manufactured by Rockland Immunochemicals are derived from starting materials of North American origin. Collection was performed in United States Department of Agriculture (USDA) inspected facilities and all materials have been inspected and certified to be free of disease and suitable for exportation. All properties listed are typical characteristics and are not specifications. All suggestions and data are offered in good faith but without guarantee as conditions and methods of use of our products are beyond our control. All claims must be made within 30 days following the date of delivery. The prospective user must determine the suitability of our materials before adopting them on a commercial scale. Suggested uses of our products are not recommendations to use our products in violation of any patent or as a license under any patent of Rockland Immunochemicals, Inc. If you require a commercial license to use this material and do not have one, then return this material, unopened to: Rockland Inc., P.O. BOX 5199, Limerick, Pennsylvania, USA.