

Human GDF-15 AccuSignal ELISA Kit - KOA0453

Code: KOA0453

Size: 1 Kit

Product Description: Human GDF-15 AccuSignal ELISA Kit - KOA0453

PhysicalState:

Label	Unconjugated
Gene Name	GDF15
Species Reactivity	Human
Storage Condition	Store vials at 4°C prior to opening. Centrifuge product if not completely clear after standing at room temperature. This product is stable for 6 months at 4°C as an undiluted liquid. Dilute only prior to immediate use. For extended storage freeze at -20°C or below for 12 months. Avoid cycles of freezing and thawing.
Synonyms	Growth/differentiation factor 15, Macrophage inhibitory cytokine 1, MIC 1, NAG-1, NRG-1, NSAID-activated gene 1 protein, NSAID-regulated gene 1 protein, PDF, PLAB, Placental bone morphogenetic protein, Placental TGF-beta, Prostate differentiation factor, PROSTATE-DERIVED FACTOR, PTGFB
Application Note	Useful in Sandwich ELISA for Quantitative Detection of Antigen. Aliquot 0.1ml per well of the 2000pg/ml, 1000pg/ml, 500pg/ml, 250pg/ml, 125pg/ml, 62.5pg/ml, 31.2pg/ml human GDF-15 standard solutions into the precoated 96-well plate. Add 0.1ml of the sample diluent buffer into the control well (Zero well). Add 0.1ml of each properly diluted sample of human cell culture supernates, serum or plasma (heparin, EDTA) to each empty well. It is recommended that each human GDF-15 standard solution and each sample be measured in duplicate.
Background	GDF-15 (Growth differentiation factor 15), also known as TGF-PL, MIC-1, PDF, PLAB, and PTGFB, is a protein belonging to the transforming growth factor beta superfamily that has a role in regulating inflammatory and apoptotic pathways in injured tissues and during disease processes. Using FISH, the MIC1 gene is mapped to 19p13.2-p13.1. Its expression in liver can be significantly up-regulated in during injury of organs such as liver, kidney, heart and lung. GDF15 showed increased expression and secretion during erythroblast maturation. GDF15 functions as an antiinflammatory cytokine by directly interfering with chemokine signaling and integrin activation.
Purity And Specificity	Natural and recombinant human GDF-15. There is no detectable cross-reactivity with other relevant proteins.
ELISA	31.2pg/ml-2000pg/ml
Expiration	See kit insert for complete instructions.
Immunogen	Expression system for standard: CHO; Immunogen sequence: A197-I308
Anti-Coagulant	Heparin Sodium

Related Products

MB-008	10X PBS pH 7.2 (0.2 M Potassium Phosphate 1.5 M Sodium Chloride) - MB-008
MB-012	10X TBS pH 7.5 (1.0 M Tris HCl 1.5 M Sodium Chloride) - MB-012
MB-013	10X TTBS pH 7.5 (1.0 M Tris HCl 1.5 M Sodium Chloride 0.1% (w/v) Tween-20) - MB-013
MB-075-1000	10X PBST (0.2 M Potassium Phosphate 1.5 M Sodium Chloride, 0.5% (v/v) Tween-20, pH 7.2) - MB-075-1000

Related Links

UniProtKB - Q99988

<http://www.uniprot.org/uniprot/Q99988>

 NCBI - http://www.ncbi.nlm.nih.gov/protein/NP_004855.2

GeneID - 9518

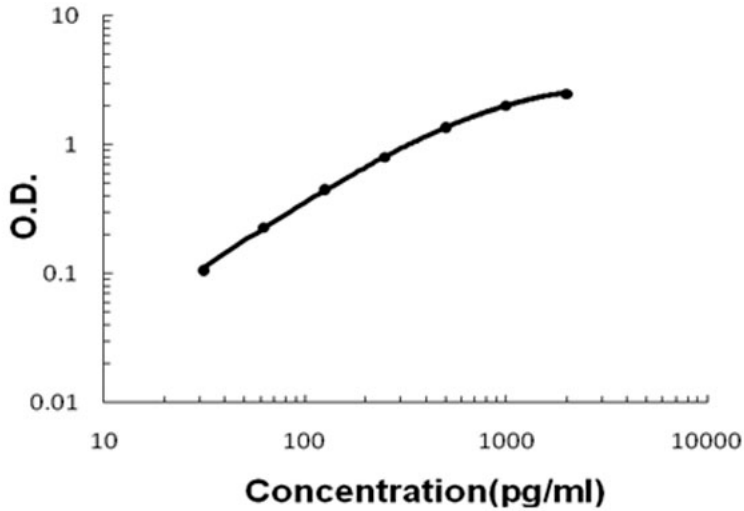
<http://www.ncbi.nlm.nih.gov/sites/entrez?db=gene&term=9518>

Images

1

Human GDF-15 AccuSignal ELISA Kit standard curve. Assay Range: 31.2pg/ml-2000pg/ml. Sensitivity: <10pg/ml.

Human GDF-15 ELISA Kit



Disclaimer

This product is for research use only and is not intended for therapeutic or diagnostic applications. Please contact a technical service representative for more information. All products of animal origin manufactured by Rockland Immunochemicals are derived from starting materials of North American origin. Collection was performed in United States Department of Agriculture (USDA) inspected facilities and all materials have been inspected and certified to be free of disease and suitable for exportation. All properties listed are typical characteristics and are not specifications. All suggestions and data are offered in good faith but without guarantee as conditions and methods of use of our products are beyond our control. All claims must be made within 30 days following the date of delivery. The prospective user must determine the suitability of our materials before adopting them on a commercial scale. Suggested uses of our products are not recommendations to use our products in violation of any patent or as a license under any patent of Rockland Immunochemicals, Inc. If you require a commercial license to use this material and do not have one, then return this material, unopened to: Rockland Inc., P.O. BOX 5199, Limerick, Pennsylvania, USA.