

CTNNBL1 IHC Antibody

Rabbit Polyclonal

Antigen Affinity Purified

Protein ID NP_110517.2

Catalog No. IHC-00742

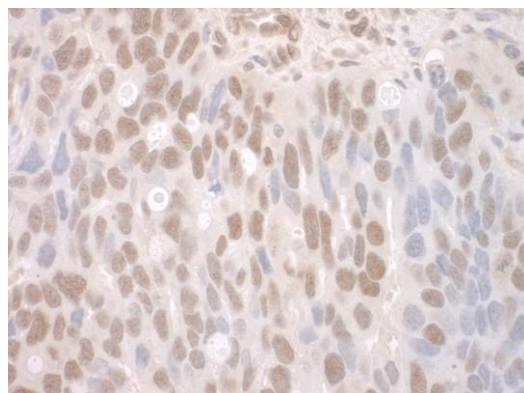
GeneID 56259

Lot No. IHC-00742-1

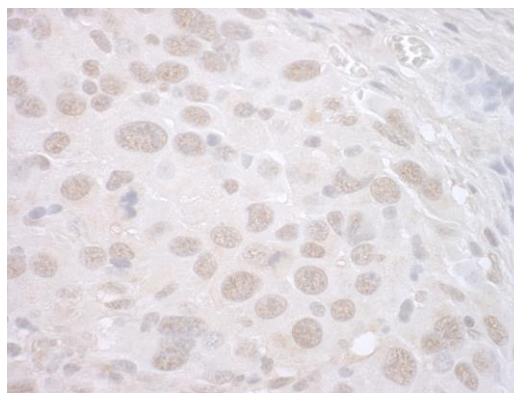


APPLICATIONS	IHC
SPECIES REACTIVITY	Human, Mouse
PRESUMED REACTIVITY	Based on 100% sequence identity, this antibody is predicted to react with Rat, Bovine, Dog, Horse, Rabbit, Pig, Panda, Orangutan, Monkey, Gorilla, Chimpanzee and Chinese hamster
AMOUNT	100 µl
CONCENTRATION	250 µg/ml
STORAGE/SHELF LIFE	2 – 8° C / 1 year from date of receipt
PHYSICAL STATE	Liquid
BUFFER	Tris-buffered Saline containing 0.1% BSA and 0.09% Sodium Azide
ISOTYPE	IgG
ORIGIN	USA
PRODUCTION PROCEDURES	Antibody was affinity purified using an epitope specific to CTNNBL1 immobilized on solid support. The epitope recognized by IHC-00742 maps to a region between residue 1 and 50 of human catenin, beta like 1 using the numbering given in entry NP_110517.2 (GeneID 56259). Antibody concentration was determined by extinction coefficient: absorbance at 280 nm of 1.4 equals 1.0 mg of IgG.
APPLICATIONS	Centrifuge tube to remove product from lid. Optimal working dilutions should be determined experimentally by the investigator. Prepare working dilution immediately before use. Immunohistochemistry 1:100 – 1:500
APPLICATION NOTES	Epitope exposure is recommended. Epitope exposure with citrate buffer will enhance staining. Likely to work with frozen sections.
IHC HUMAN CONTROLS	In some cases, the antibody may be diluted further than indicated. Breast Carcinoma, Colon Carcinoma, Ovarian Carcinoma, Prostate Carcinoma, Testicular Seminoma
IHC MOUSE CONTROLS	Colon Carcinoma CT26, Hybridoma Tumor
ADDITIONAL INFO	https://www.bethyl.com/product/IHC-00742 Use the link above to view SDS, a current list of citations, and other product specific information.

This document certifies that this product has met all of the quality control standards defined by Bethyl Laboratories, Inc.
Eric McIntush, PhD | Chief Scientific Officer Date: June 21, 2019



Detection of human CTNNB1 by immunohistochemistry.
Sample: FFPE section of human ovarian carcinoma.
Antibody: Affinity purified rabbit anti-CTNNB1 (Cat. No. IHC-00742) used at a dilution of 1:250 *Detection:* DAB



Detection of mouse CTNNB1 by immunohistochemistry.
Sample: FFPE section of mouse hybridoma tumor.
Antibody: Affinity purified rabbit anti-CTNNB1 (Cat. No. IHC-00742) used at a dilution of 1:250 *Detection:* DAB