

# MERIT40 IHC Antibody

Rabbit Polyclonal

Antigen Affinity Purified

Protein ID NP\_054892.2

Catalog No. IHC-00714

GeneID 29086

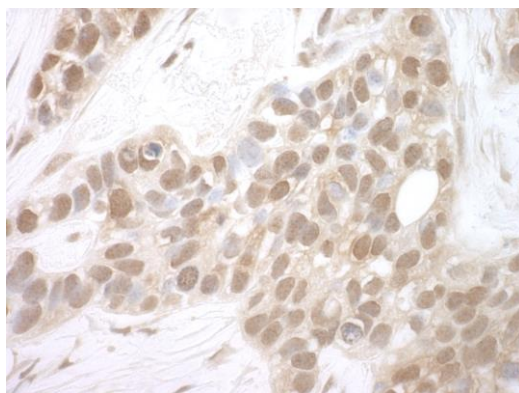
Lot No. IHC-00714-1



<b>APPLICATIONS</b>	IHC
<b>SPECIES REACTIVITY</b>	Human
<b>PRESUMED REACTIVITY</b>	Based on 100% sequence identity, this antibody is predicted to react with Mouse, Rat, Bovine, Dog, Horse, Pig, Panda, Orangutan, Monkey, Gorilla, Chimpanzee, Chinese hamster and Small-eared galago
<b>AMOUNT</b>	100 µl
<b>CONCENTRATION</b>	250 µg/ml
<b>STORAGE/SHELF LIFE</b>	2 - 8° C / 1 year from date of receipt
<b>PHYSICAL STATE</b>	Liquid
<b>BUFFER</b>	Tris-buffered Saline containing 0.1% BSA and 0.09% Sodium Azide
<b>ISOTYPE</b>	IgG
<b>ORIGIN</b>	USA
<b>PRODUCTION PROCEDURES</b>	<p>Antibody was affinity purified using an epitope specific to MERIT40 immobilized on solid support.</p> <p>The epitope recognized by IHC-00714 maps to a region between residue 175 and 225 of human mediator of Rap80 interactions and targeting 40 kD using the numbering given in entry NP_054892.2 (GeneID 29086).</p> <p>Antibody concentration was determined by extinction coefficient: absorbance at 280 nm of 1.4 equals 1.0 mg of IgG.</p>
<b>APPLICATIONS</b>	<p>Centrifuge tube to remove product from lid. Optimal working dilutions should be determined experimentally by the investigator. Prepare working dilution immediately before use.</p> <p>Immunohistochemistry 1:100 - 1:500</p>
<b>APPLICATION NOTES</b>	<p>Epitope exposure is recommended.</p> <p>Epitope exposure with citrate buffer will enhance staining.</p> <p>Likely to work with frozen sections.</p> <p>In some cases, the antibody may be diluted further than indicated.</p>
<b>IHC HUMAN CONTROLS</b>	Breast Carcinoma, Osteosarcoma
<b>ADDITIONAL INFO</b>	<p><a href="https://www.bethyl.com/product/IHC-00714">https://www.bethyl.com/product/IHC-00714</a></p> <p>Use the link above to view SDS, a current list of citations, and other product specific information.</p>

This document certifies that this product has met all of the quality control standards defined by Bethyl Laboratories, Inc.  
Eric McIntush, PhD | Chief Scientific Officer

Date: June 21, 2019

**Detection of human MERIT40 by immunohistochemistry.**

*Sample:* FFPE section of human breast carcinoma.

*Antibody:* Affinity purified rabbit anti-MERIT40 (Cat. No. IHC-00714) used at a dilution of 1:250

*Detection:* DAB