

NCBP2 IHC Antibody

Rabbit Polyclonal

Antigen Affinity Purified

Protein ID NP_031388.2

Catalog No. IHC-00707

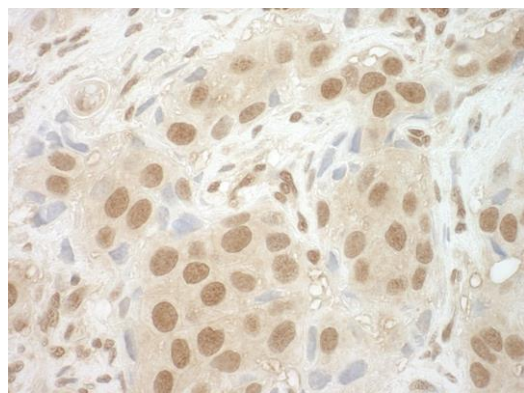
GeneID 22916

Lot No. IHC-00707-1



APPLICATIONS	IHC
SPECIES REACTIVITY	Human, Mouse
PRESUMED REACTIVITY	Based on 100% sequence identity, this antibody is predicted to react with Bovine, Dog, Horse, Rabbit, Pig, Panda, Orangutan, Monkey, Chimpanzee, Northern white-cheeked gibbon and Little brown bat
AMOUNT	100 µl
CONCENTRATION	100 µg/ml
STORAGE/SHELF LIFE	2 - 8° C / 1 year from date of receipt
PHYSICAL STATE	Liquid
BUFFER	Tris-buffered Saline containing 0.1% BSA and 0.09% Sodium Azide
ISOTYPE	IgG
ORIGIN	USA
PRODUCTION PROCEDURES	Antibody was affinity purified using an epitope specific to NCBP2 immobilized on solid support. The epitope recognized by IHC-00707 maps to a region between residue 106 to 156 of human nuclear cap binding protein subunit 2 using the numbering given in entry NP_031388.2 (GeneID 22916). Antibody concentration was determined by extinction coefficient: absorbance at 280 nm of 1.4 equals 1.0 mg of IgG.
APPLICATIONS	Centrifuge tube to remove product from lid. Optimal working dilutions should be determined experimentally by the investigator. Prepare working dilution immediately before use. Immunohistochemistry 1:100 – 1:500
APPLICATION NOTES	Epitope exposure is recommended. Epitope exposure with citrate buffer will enhance staining. Likely to work with frozen sections.
IHC HUMAN CONTROLS	In some cases, the antibody may be diluted further than indicated. Breast Carcinoma, Colon Carcinoma, Glioblastoma, Testicular Seminoma
IHC MOUSE CONTROLS	Teratoma
ADDITIONAL INFO	https://www.bethyl.com/product/IHC-00707 Use the link above to view SDS, a current list of citations, and other product specific information.

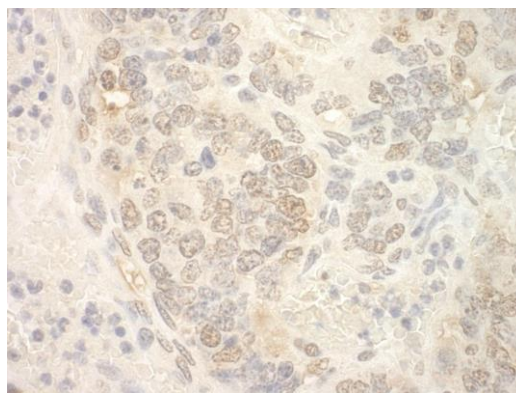
This document certifies that this product has met all of the quality control standards defined by Bethyl Laboratories, Inc.
Eric McIntush, PhD | Chief Scientific Officer Date: June 21, 2019

**Detection of human NCBP2 by immunohistochemistry.**

Sample: FFPE section of human breast carcinoma.

Antibody: Affinity purified rabbit anti-NCBP2 (Cat. No. IHC-00707) used at a dilution of 1:100

Detection: DAB

**Detection of mouse NCBP2 by immunohistochemistry.**

Sample: FFPE section of mouse teratoma. *Antibody:* Affinity purified rabbit anti-NCBP2 (Cat. No. IHC-00707) used at a dilution of 1:100

Detection: DAB