

APC7 IHC Antibody

Rabbit Polyclonal

Antigen Affinity Purified

Protein ID AAI41849.1

Catalog No. IHC-00706

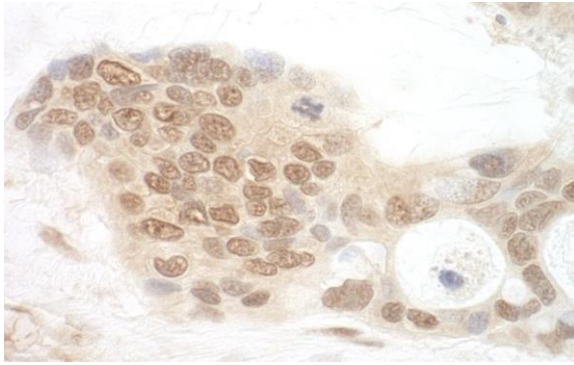
GeneID 51434

Lot No. IHC-00706-1

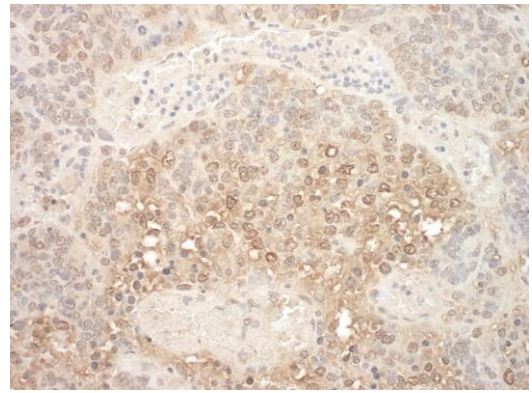


APPLICATIONS	IHC
SPECIES REACTIVITY	Human, Mouse
PRESUMED REACTIVITY	Based on 100% sequence identity, this antibody is predicted to react with Rat, Zebrafish, Chicken, Turkey, Dog, Horse, Rabbit, Guinea pig_10141, Pig, Panda, Monkey, Gorilla and Atlantic salmon
AMOUNT	100 µl
CONCENTRATION	250 µg/ml
STORAGE/SHELF LIFE	2 - 8° C / 1 year from date of receipt
PHYSICAL STATE	Liquid
BUFFER	Tris-buffered Saline containing 0.1% BSA and 0.09% Sodium Azide
ISOTYPE	IgG
ORIGIN	USA
PRODUCTION PROCEDURES	Antibody was affinity purified using an epitope specific to APC7 immobilized on solid support. The epitope recognized by IHC-00706 maps to a region between residue 515 and 565 of human anaphase promoting complex subunit 7 using the numbering given in entry AAI41849.1 (GeneID 51434). Antibody concentration was determined by extinction coefficient: absorbance at 280 nm of 1.4 equals 1.0 mg of IgG.
APPLICATIONS	Centrifuge tube to remove product from lid. Optimal working dilutions should be determined experimentally by the investigator. Prepare working dilution immediately before use. Immunohistochemistry 1:100 - 1:500
APPLICATION NOTES	Epitope exposure is recommended. Epitope exposure with citrate buffer will enhance staining. Likely to work with frozen sections.
IHC HUMAN CONTROLS	In some cases, the antibody may be diluted further than indicated. Breast Carcinoma, Ovarian Carcinoma, Prostate Carcinoma
IHC MOUSE CONTROLS	Hybridoma Tumor, Teratoma
ADDITIONAL INFO	https://www.bethyl.com/product/IHC-00706 Use the link above to view SDS, a current list of citations, and other product specific information.

This document certifies that this product has met all of the quality control standards defined by Bethyl Laboratories, Inc.
Eric McIntush, PhD | Chief Scientific Officer Date: June 21, 2019



Detection of human APC7 by immunohistochemistry.
Sample: FFPE section of human ovarian carcinoma.
Antibody: Affinity purified rabbit anti-APC7 (Cat. No. IHC-00706) used at a dilution of 1:250
Detection: DAB



Detection of mouse APC7 by immunohistochemistry.
Sample: FFPE section of mouse teratoma. *Antibody:* Affinity purified rabbit anti-APC7 (Cat. No. IHC-00706) used at a dilution of 1:250
Detection: DAB