

# ZEB2/SIP IHC Antibody

Rabbit Polyclonal

Antigen Affinity Purified Protein ID NP\_055610.1

Catalog No. IHC-00691 GeneID 9839

Lot No. IHC-00691-1



<b>APPLICATIONS</b>	IHC
<b>SPECIES REACTIVITY</b>	Human, Mouse
<b>PRESUMED REACTIVITY</b>	Based on 100% sequence identity, this antibody is predicted to react with Bovine, Dog, Horse, Rabbit, Pig, Panda, Orangutan, Monkey, Gorilla, Chimpanzee, Naked mole rat and Small-eared galago
<b>AMOUNT</b>	100 µl
<b>CONCENTRATION</b>	250 µg/ml
<b>STORAGE/SHELF LIFE</b>	2 - 8° C / 1 year from date of receipt
<b>PHYSICAL STATE</b>	Liquid
<b>BUFFER</b>	Tris-buffered Saline containing 0.1% BSA and 0.09% Sodium Azide
<b>ISOTYPE</b>	IgG
<b>ORIGIN</b>	USA
<b>PRODUCTION PROCEDURES</b>	Antibody was affinity purified using an epitope specific to ZEB2/SIP immobilized on solid support.

The epitope recognized by IHC-00691 maps to a region between residue 750 and 800 of human Smad interacting-protein 1 using the numbering given in entry NP\_055610.1 (GeneID 9839).

Antibody concentration was determined by extinction coefficient: absorbance at 280 nm of 1.4 equals 1.0 mg of IgG.

**APPLICATIONS** Centrifuge tube to remove product from lid. Optimal working dilutions should be determined experimentally by the investigator. Prepare working dilution immediately before use.

Immunohistochemistry 1:100 - 1:500

**APPLICATION NOTES** Epitope exposure is recommended.

Epitope exposure with citrate buffer will enhance staining.

Likely to work with frozen sections.

In some cases, the antibody may be diluted further than indicated.

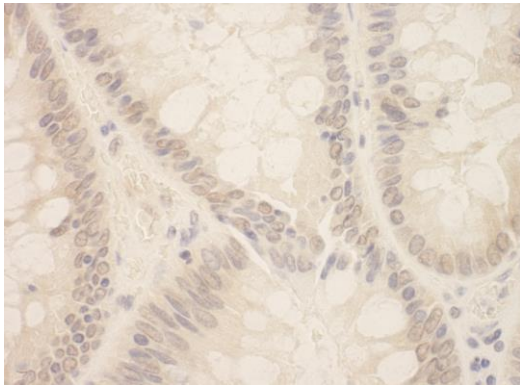
**IHC HUMAN CONTROLS** Breast Carcinoma, Colon Carcinoma

**IHC MOUSE CONTROLS** Teratoma

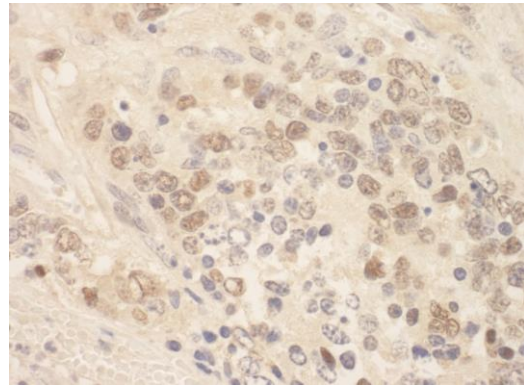
**ADDITIONAL INFO** <https://www.bethyl.com/product/IHC-00691>

Use the link above to view SDS, a current list of citations, and other product specific information.

This document certifies that this product has met all of the quality control standards defined by Bethyl Laboratories, Inc.  
Eric McIntush, PhD | Chief Scientific Officer Date: June 29, 2020

**Detection of human SIP1 by immunohistochemistry.**

*Sample:* FFPE section of human colon carcinoma. *Antibody:* Affinity purified rabbit anti-ZEB2/SIP (Cat. No. IHC-00691) used at a dilution of 1:250 *Detection:* DAB

**Detection of mouse SIP1 by immunohistochemistry.**

*Sample:* FFPE section of mouse teratoma. *Antibody:* Affinity purified rabbit anti-ZEB2/SIP (Cat. No. IHC-00691) used at a dilution of 1:250 *Detection:* DAB