

BHD IHC Antibody

Rabbit Polyclonal

Antigen Affinity Purified

Protein ID NP_659434.2

Catalog No. IHC-00679

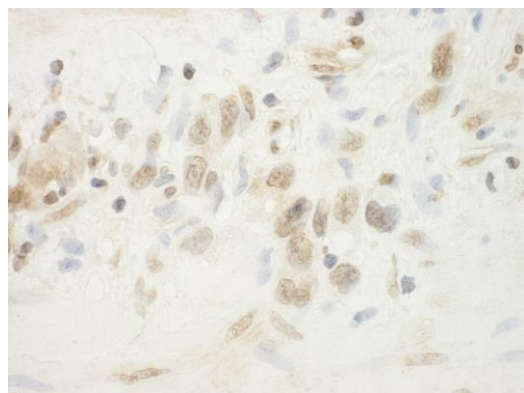
GeneID 201163

Lot No. IHC-00679-1

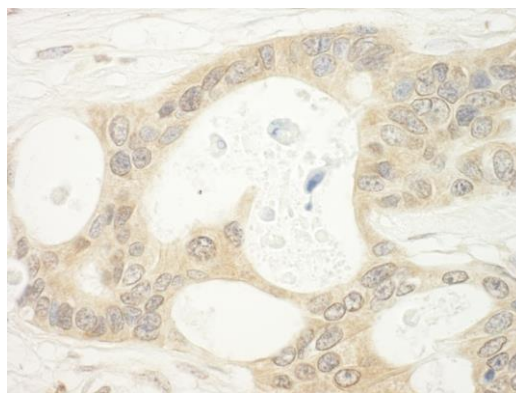


APPLICATIONS	IHC
SPECIES REACTIVITY	Human
PRESUMED REACTIVITY	Based on 100% sequence identity, this antibody is predicted to react with Gorilla and Chimpanzee
AMOUNT	100 µl
CONCENTRATION	250 µg/ml
STORAGE/SHELF LIFE	2 – 8° C / 1 year from date of receipt
PHYSICAL STATE	Liquid
BUFFER	Tris-buffered Saline containing 0.1% BSA and 0.09% Sodium Azide
ISOTYPE	IgG
ORIGIN	USA
PRODUCTION PROCEDURES	<p>Antibody was affinity purified using an epitope specific to BHD immobilized on solid support.</p> <p>The epitope recognized by IHC-00679 maps to a region between residue 1 and 50 of human Birt-Hogg-Dube syndrome protein using the numbering given in entry NP_659434.2 (GeneID 201163).</p> <p>Antibody concentration was determined by extinction coefficient: absorbance at 280 nm of 1.4 equals 1.0 mg of IgG.</p>
APPLICATIONS	<p>Centrifuge tube to remove product from lid. Optimal working dilutions should be determined experimentally by the investigator. Prepare working dilution immediately before use.</p> <p>Immunohistochemistry 1:100 – 1:500</p>
APPLICATION NOTES	<p>Epitope exposure is recommended.</p> <p>Epitope exposure with citrate buffer will enhance staining.</p> <p>Likely to work with frozen sections.</p> <p>In some cases, the antibody may be diluted further than indicated.</p>
IHC HUMAN CONTROLS	Anaplastic Thyroid Carcinoma, Breast Carcinoma, Linitis Plastica Stomach Cancer, Ovarian Carcinoma
ADDITIONAL INFO	<p>https://www.bethyl.com/product/IHC-00679</p> <p>Use the link above to view SDS, a current list of citations, and other product specific information.</p>

This document certifies that this product has met all of the quality control standards defined by Bethyl Laboratories, Inc.
Eric McIntush, PhD | Chief Scientific Officer Date: June 21, 2019



Detection of human BHD by immunohistochemistry.
Sample: FFPE section of human linitis plastica stomach cancer. *Antibody:* Affinity purified rabbit anti-BHD (Cat. No. IHC-00679) used at a dilution of 1:250 *Detection:* DAB



Detection of human BHD by immunohistochemistry.
Sample: FFPE section of human ovarian carcinoma. *Antibody:* Affinity purified rabbit anti-BHD (Cat. No. IHC-00679) used at a dilution of 1:250 *Detection:* DAB