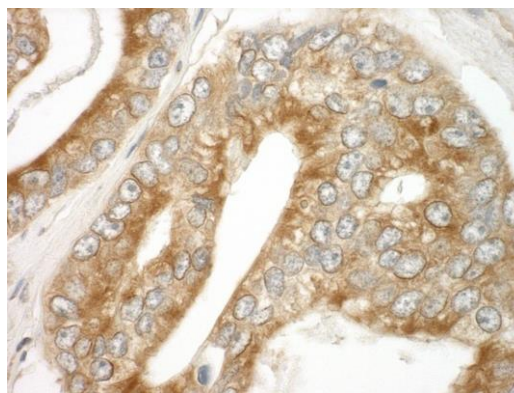
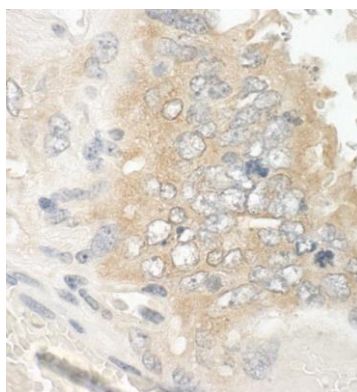


Detection of human EB1 by immunohistochemistry.
Sample: FFPE section of human prostate carcinoma.
Antibody: Affinity purified rabbit anti-EB1 (Cat. No. IHC-00674) used at a dilution of 1:100. *Detection:* Red-fluorescent goat anti-rabbit IgG-heavy and light chain cross-adsorbed Antibody DyLight® 594 Conjugated used at a dilution of 1:100.



Detection of human EB1 by immunohistochemistry.
Sample: FFPE section of human prostate carcinoma.
Antibody: Affinity purified rabbit anti-EB1 (Cat. No. IHC-00674) used at a dilution of 1:250. *Detection:* DAB



Detection of mouse EB1 by immunohistochemistry.
Sample: FFPE section of mouse teratoma. *Antibody:* Affinity purified rabbit anti-EB1 (Cat. No. IHC-00674) used at a dilution of 1:250. *Detection:* DAB