

Septin 9 IHC Antibody

Rabbit Polyclonal

Antigen Affinity Purified

Protein ID NP_001106963.1

Catalog No. IHC-00672

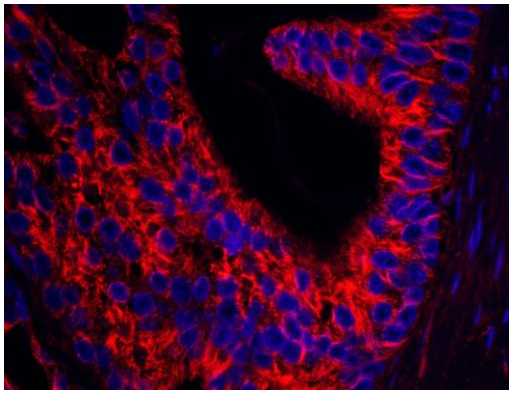
GeneID 10801

Lot No. IHC-00672-1

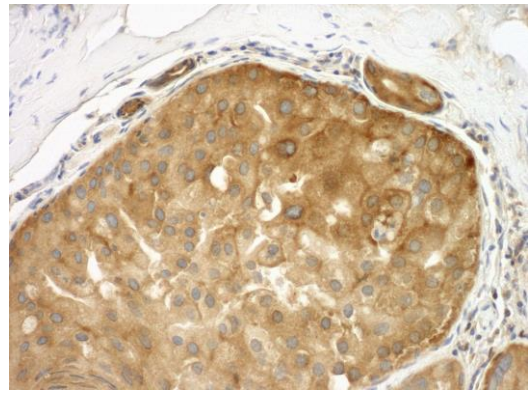


APPLICATIONS	IHC, IHC-IF
SPECIES REACTIVITY	Human
PRESUMED REACTIVITY	Based on 100% sequence identity, this antibody is predicted to react with Monkey, Crab-eating macaque and White-tufted-ear marmoset
AMOUNT	100 µl
CONCENTRATION	100 µg/ml
STORAGE/SHELF LIFE	2 - 8° C / 1 year from date of receipt
PHYSICAL STATE	Liquid
BUFFER	Tris-buffered Saline containing 0.1% BSA and 0.09% Sodium Azide
ISOTYPE	IgG
ORIGIN	USA
PRODUCTION PROCEDURES	<p>Antibody was affinity purified using an epitope specific to Septin 9 immobilized on solid support.</p> <p>The epitope recognized by IHC-00672 maps to a region between residue 536 and 586 of human septin 9 using the numbering given in entry NP_001106963.1 (GeneID 10801).</p> <p>Immunoglobulin concentration was determined by extinction coefficient: absorbance at 280 nm of 1.4 equals 1.0 mg of IgG.</p>
APPLICATIONS	<p>Centrifuge tube to remove product from lid. Optimal working dilutions should be determined experimentally by the investigator. Prepare working dilution immediately before use.</p> <p>Immunohistochemistry 1:100 - 1:500</p> <p>Immunofluorescence 1:50 - 1:500 (IHC)</p>
APPLICATION NOTES	<p>Epitope exposure is recommended.</p> <p>Epitope exposure with citrate buffer will enhance staining.</p> <p>Likely to work with frozen sections.</p> <p>In some cases, the antibody may be diluted further than indicated.</p>
IHC HUMAN CONTROLS	Breast Carcinoma, Colon Carcinoma, Prostate Carcinoma, Stomach Adenocarcinoma
ADDITIONAL INFO	<p>https://www.bethyl.com/product/IHC-00672</p> <p>Use the link above to view SDS, a current list of citations, and other product specific information.</p>

This document certifies that this product has met all of the quality control standards defined by Bethyl Laboratories, Inc.
Eric McIntush, PhD | Chief Scientific Officer Date: June 21, 2019



Detection of human Septin 9 by immunohistochemistry.
Sample: FFPE section of human prostate carcinoma.
Antibody: Affinity purified rabbit anti-Septin 9 (Cat. No. IHC-00672) used at a dilution of 1:100. *Detection:* Red-fluorescent goat anti-rabbit IgG-heavy and light chain cross-adsorbed Antibody DyLight® 594 Conjugated used at a dilution of 1:100.



Detection of human Septin 9 by immunohistochemistry.
Sample: FFPE section of human breast carcinoma.
Antibody: Affinity purified rabbit anti-Septin 9 (Cat. No. IHC-00672) used at a dilution of 1:250. *Detection:* DAB