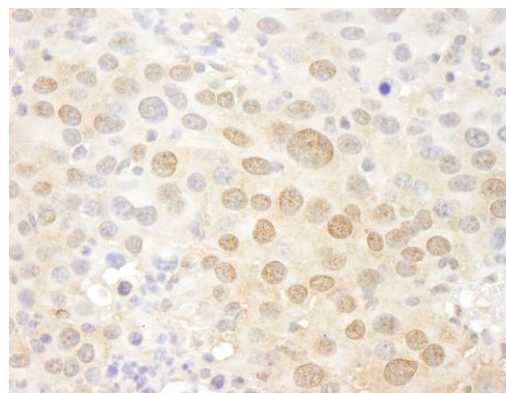


**Detection of human Pc2 by immunohistochemistry.**  
*Sample:* FFPE section of human breast carcinoma.  
*Antibody:* Affinity purified rabbit anti-Pc2 (Cat. No. IHC-00668) used at a dilution of 1:250. *Detection:* DAB



**Detection of mouse Pc2 by immunohistochemistry.**  
*Sample:* FFPE section of mouse renal cell carcinoma.  
*Antibody:* Affinity purified rabbit anti-Pc2 (Cat. No. IHC-00668) used at a dilution of 1:250. *Detection:* DAB