

# SET IHC Antibody

Rabbit Polyclonal

Antigen Affinity Purified Protein ID NP\_001116293.1

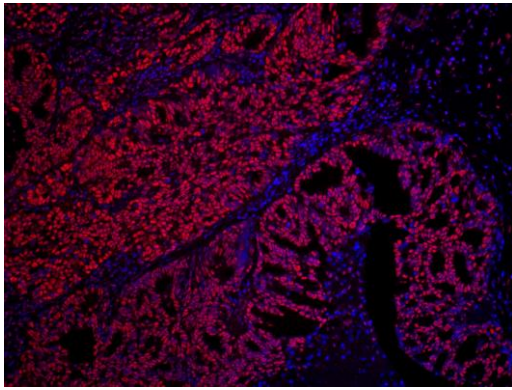
Catalog No. IHC-00645 GenelD 6418

Lot No. IHC-00645-1

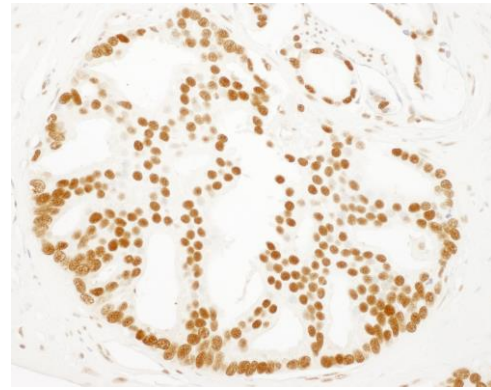
---

<b>APPLICATIONS</b>	IHC
<b>SPECIES REACTIVITY</b>	Human
<b>PRESUMED REACTIVITY</b>	Based on 100% sequence identity, this antibody is predicted to react with Mouse, Rat, Zebrafish, X. laevis, X. tropicalis, Chicken, Turkey, Bovine, Horse, Rabbit, Guinea pig_10141, Pig and Panda
<b>AMOUNT</b>	100 µl
<b>CONCENTRATION</b>	50 µg/ml
<b>STORAGE/SHELF LIFE</b>	2 – 8°C / 1 year from date of receipt
<b>PHYSICAL STATE</b>	Liquid
<b>BUFFER</b>	Tris-buffered Saline containing 0.1% BSA and 0.09% Sodium Azide
<b>ISOTYPE</b>	IgG
<b>ORIGIN</b>	USA
<b>PRODUCTION PROCEDURES</b>	Antibody was affinity purified using an epitope specific to SET immobilized on solid support.  The epitope recognized by IHC-00645 maps to a region between residue 125 and 175 of human SET nuclear oncogene using the numbering given in entry NP_001116293.1 (GenelD 6418).  Immunoglobulin concentration was determined by extinction coefficient: absorbance at 280 nm of 1.4 equals 1.0 mg of IgG.
<b>APPLICATIONS</b>	Centrifuge tube to remove product from lid. Optimal working dilutions should be determined experimentally by the investigator. Prepare working dilution immediately before use.  Immunohistochemistry 1:100 – 1:500
<b>APPLICATION NOTES</b>	Epitope exposure is recommended.  Epitope exposure with citrate buffer will enhance staining.  Likely to work with frozen sections.
<b>IHC HUMAN CONTROLS</b>	In some cases, the antibody may be diluted further than indicated. Breast Carcinoma, Colon Carcinoma, Non-Small Cell Lung Cancer, Ovarian Carcinoma, Prostate Carcinoma, Testicular Seminoma
<b>ADDITIONAL INFO</b>	<a href="https://www.fortislife.com/p/IHC-00645">https://www.fortislife.com/p/IHC-00645</a> Use the link above to view SDS, a current list of citations, and other product specific information.

This document certifies that this product has met all of the quality control standards defined by Bethyl Laboratories, Inc.  
Michael Spencer, PhD Date: August 5, 2022



**Detection of human SET by immunohistochemistry.**  
*Sample:* FFPE section of human prostate carcinoma.  
*Antibody:* Affinity purified rabbit anti-SET (Cat. No. IHC-00645) used at a dilution of 1:100. *Detection:* Red-fluorescent goat anti-rabbit IgG-heavy and light chain cross-adsorbed Antibody DyLight® 594 Conjugated used at a dilution of 1:100.



**Detection of human SET by immunohistochemistry.**  
*Sample:* FFPE section of human prostate carcinoma.  
*Antibody:* Affinity purified rabbit anti-SET (Cat. No. IHC-00645) used at a dilution of 1:250. *Detection:* DAB