

ARID2 IHC Antibody

Rabbit Polyclonal

Antigen Affinity Purified

Protein ID NP_689854.2

Catalog No. IHC-00633

GeneID 196528

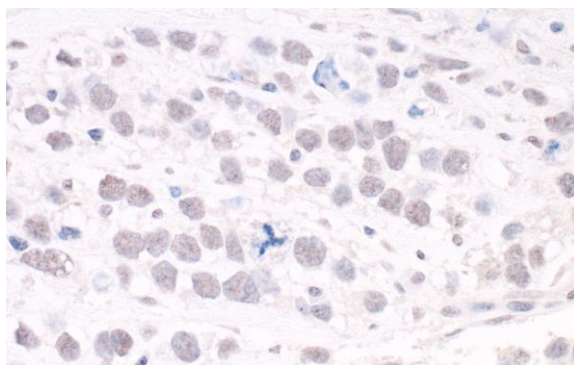
Lot No. IHC-00633-2



| | |
|------------------------------|--|
| APPLICATIONS | IHC |
| SPECIES REACTIVITY | Human |
| PRESUMED REACTIVITY | Based on 100% sequence identity, this antibody is predicted to react with Bovine, Dog, Horse, Pig, Panda, Orangutan, Monkey, Gorilla, Chimpanzee, Northern white-cheeked gibbon and Little brown bat |
| AMOUNT | 100 µl |
| CONCENTRATION | 100 µg/ml |
| STORAGE/SHELF LIFE | 2 – 8° C / 1 year from date of receipt |
| PHYSICAL STATE | Liquid |
| BUFFER | Tris-buffered Saline containing 0.1% BSA and 0.09% Sodium Azide |
| ISOTYPE | IgG |
| ORIGIN | USA |
| PRODUCTION PROCEDURES | <p>Antibody was affinity purified using an epitope specific to ARID2 immobilized on solid support.</p> <p>The epitope recognized by IHC-00633 maps to a region between residue 1785 and 1835 of human AT rich interactive domain 2 using the numbering given in entry NP_689854.2 (GeneID 196528).</p> <p>Immunoglobulin concentration was determined by extinction coefficient: absorbance at 280 nm of 1.4 equals 1.0 mg of IgG.</p> |
| APPLICATIONS | <p>Centrifuge tube to remove product from lid. Optimal working dilutions should be determined experimentally by the investigator. Prepare working dilution immediately before use.</p> <p>Immunohistochemistry 1:100 – 1:500</p> |
| APPLICATION NOTES | <p>Epitope exposure is recommended.</p> <p>Epitope exposure with citrate buffer will enhance staining.</p> <p>Likely to work with frozen sections.</p> <p>In some cases, the antibody may be diluted further than indicated.</p> |
| IHC HUMAN CONTROLS | Breast Carcinoma, Prostate Carcinoma, Testicular Seminoma |
| ADDITIONAL INFO | <p>https://www.bethyl.com/product/IHC-00633</p> <p>Use the link above to view SDS, a current list of citations, and other product specific information.</p> |

This document certifies that this product has met all of the quality control standards defined by Bethyl Laboratories, Inc.
Eric McIntush, PhD | Chief Scientific Officer

Date: June 21, 2019

**Detection of human ARID2 by immunohistochemistry.**

Sample: FFPE section of human testicular seminoma.

Antibody: Affinity purified rabbit anti-ARID2 (Cat. No. IHC-00633 lot 2) used at a dilution of 1:500. *Detection:* DAB