

# eIF2beta/EIF2S2 IHC Antibody

Rabbit Polyclonal

Antigen Affinity Purified Protein ID NP\_003899.2

Catalog No. IHC-00615 GeneID 8894

Lot No. IHC-00615-1



<b>APPLICATIONS</b>	IHC
<b>SPECIES REACTIVITY</b>	Human, Mouse
<b>PRESUMED REACTIVITY</b>	Based on 100% sequence identity, this antibody is predicted to react with Rat, Zebrafish, X. laevis, X. tropicalis, Chicken, Turkey, Dog, Horse, Rabbit, Guinea pig_10141, Pig, Panda and Orangutan
<b>AMOUNT</b>	100 µl
<b>CONCENTRATION</b>	250 µg/ml
<b>STORAGE/SHELF LIFE</b>	2 - 8° C / 1 year from date of receipt
<b>PHYSICAL STATE</b>	Liquid
<b>BUFFER</b>	Tris-buffered Saline containing 0.1% BSA and 0.09% Sodium Azide
<b>ORIGIN</b>	USA
<b>PRODUCTION PROCEDURES</b>	Antibody was affinity purified using an epitope specific to eIF2beta/EIF2S2 immobilized on solid support.

The epitope recognized by IHC-00615 maps to a region between residue 283 and 333 of human eukaryotic translation initiation factor 2, subunit 2 beta, 38kDa using the numbering given in entry NP\_003899.2 (GeneID 8894).

Immunoglobulin concentration was determined by extinction coefficient: absorbance at 280 nm of 1.4 equals 1.0 mg of IgG.

**APPLICATIONS** Centrifuge tube to remove product from lid. Optimal working dilutions should be determined experimentally by the investigator. Prepare working dilution immediately before use.

Immunohistochemistry 1:100 - 1:500

**APPLICATION NOTES** Epitope exposure is recommended.

Epitope exposure with citrate buffer will enhance staining.

Likely to work with frozen sections.

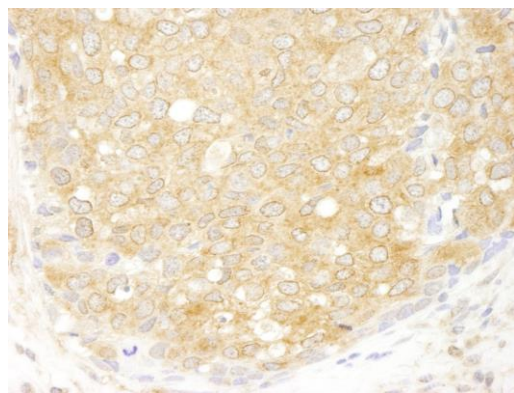
In some cases, the antibody may be diluted further than indicated.

**IHC HUMAN CONTROLS** Breast Carcinoma, Colon Carcinoma, Ovarian Carcinoma

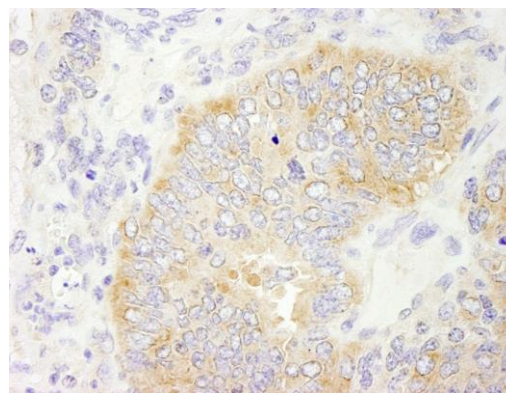
**IHC MOUSE CONTROLS** Teratoma

**ADDITIONAL INFO** <https://www.bethyl.com/product/IHC-00615>  
Use the link above to view SDS, a current list of citations, and other product specific information.

This document certifies that this product has met all of the quality control standards defined by Bethyl Laboratories, Inc.  
Eric McIntush, PhD | Chief Scientific Officer Date: June 21, 2019



**Detection of human eIF2beta/EIF2S2 by immunohistochemistry.** *Sample:* FFPE section of human breast carcinoma. *Antibody:* Affinity purified rabbit anti-eIF2beta/EIF2S2 (Cat. No. IHC-00615) used at a dilution of 1:250 *Detection:* DAB



**Detection of mouse eIF2beta/EIF2S2 by immunohistochemistry.** *Sample:* FFPE section of mouse teratoma. *Antibody:* Affinity purified rabbit anti-eIF2beta/EIF2S2 (Cat. No. IHC-00615) used at a dilution of 1:250 *Detection:* DAB