

Human C-Reactive Protein (CRP) IHC Antibody

Goat Polyclonal

Antigen Affinity Purified

Catalog No. IHC-00613 Uniprot ID P02741

Lot No. 2 GenelID 1401

APPLICATIONS	IHC
SPECIES REACTIVITY	Human
AMOUNT	100 µl
CONCENTRATION	250 µg/ml
STORAGE/SHELF LIFE	2 – 8°C / 1 year from date of receipt
PHYSICAL STATE	Liquid
BUFFER	Tris-buffered Saline containing 0.1% BSA and 0.09% Sodium Azide
ISOTYPE	IgG
ORIGIN	USA
PRODUCTION PROCEDURES	Antiserum was solid phase adsorbed to ensure specificity. The antibody was isolated by affinity chromatography using antigen coupled to agarose beads.

Immunoglobulin concentration was determined using Beer's Law where 1mg/mL IgG has an A280 of 1.4.

APPLICATIONS Centrifuge tube to remove product from lid. Optimal working dilutions should be determined experimentally by the investigator. Prepare working dilution immediately before use.

Immunohistochemistry 1:100 to 1:500. Epitope retrieval with citrate buffer pH 6.0 is recommended for FFPE tissue sections.

APPLICATION NOTES Epitope exposure is recommended.

Epitope exposure with citrate buffer will enhance staining.

Likely to work with frozen sections.

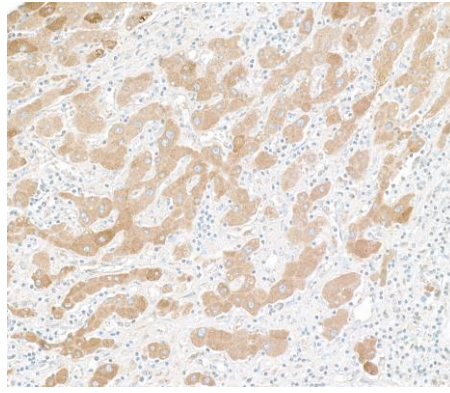
In some cases, the antibody may be diluted further than indicated.

IHC HUMAN CONTROLS Liver

ADDITIONAL INFO <https://www.fortislife.com/p/IHC-00613>

Use the link above to view SDS, a current list of citations, and other product specific information.

This document certifies that this product has met all of the quality control standards defined by Bethyl Laboratories, Inc.
Michael Spencer, PhD Date: December 14, 2023



Detection of human C-Reactive Protein by immunohistochemistry. *Sample:* FFPE section of human liver. *Antibody:* Affinity purified goat anti-C-Reactive Protein (IHC-00613) used at a dilution of 1:250 *Detection:* DAB