

BRD2 IHC Antibody

Rabbit Polyclonal

Antigen Affinity Purified

Protein ID NP_005095.1

Catalog No. IHC-00612

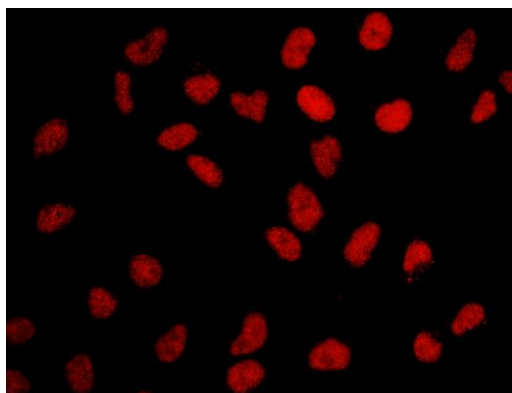
GeneID 6046

Lot No. IHC-00612-3



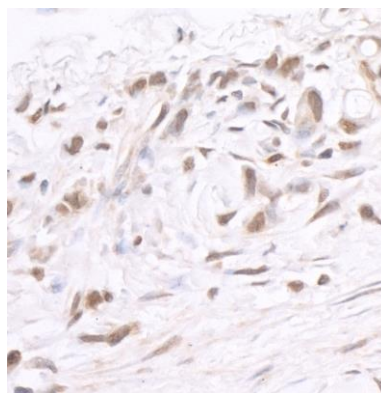
APPLICATIONS	IHC, ICC-IF
SPECIES REACTIVITY	Human
PRESUMED REACTIVITY	Based on 100% sequence identity, this antibody is predicted to react with Mouse, Bovine, Dog, Horse, Guinea pig_10141, Pig, Panda, Orangutan, Monkey, Gorilla, Chimpanzee and Chinese hamster
AMOUNT	100 µl
CONCENTRATION	250 µg/ml
STORAGE/SHELF LIFE	2 – 8° C / 1 year from date of receipt
PHYSICAL STATE	Liquid
BUFFER	Tris-buffered Saline containing 0.1% BSA and 0.09% Sodium Azide
ISOTYPE	IgG
ORIGIN	USA
PRODUCTION PROCEDURES	<p>Antibody was affinity purified using an epitope specific to BRD2 immobilized on solid support.</p> <p>The epitope recognized by IHC-00612 maps to a region between residue 675 and 725 of human bromodomain containing 2 using the numbering given in entry NP_005095.1 (GeneID 6046).</p> <p>Antibody concentration was determined by extinction coefficient: absorbance at 280 nm of 1.4 equals 1.0 mg of IgG.</p>
APPLICATIONS	<p>Centrifuge tube to remove product from lid. Optimal working dilutions should be determined experimentally by the investigator. Prepare working dilution immediately before use.</p> <p>Immunohistochemistry 1:100 – 1:500</p> <p>Immunofluorescence 1:100 – 1:500 (ICC)</p>
APPLICATION NOTES	<p>Epitope exposure is recommended.</p> <p>Epitope exposure with citrate buffer will enhance staining.</p> <p>Formaldehyde-Fixed Cells 1:100 – 1:500: Permeabilization with Triton-X 100 is recommended</p> <p>Likely to work with frozen sections.</p>
IHC HUMAN CONTROLS	<p>In some cases, the antibody may be diluted further than indicated.</p> <p>Breast Carcinoma, Colon Carcinoma, Prostate Carcinoma, HeLa Cells</p>
ADDITIONAL INFO	<p>https://www.bethyl.com/product/IHC-00612</p> <p>Use the link above to view SDS, a current list of citations, and other product specific information.</p>

This document certifies that this product has met all of the quality control standards defined by Bethyl Laboratories, Inc.
Eric McIntush, PhD | Chief Scientific Officer Date: June 21, 2019

**Detection of human BRD2 by immunocytochemistry.**

Sample: Formaldehyde-fixed asynchronous HeLa cells.

Antibody: Affinity purified rabbit anti-BRD2 (Cat. No. IHC-00612) used at a dilution of 1:250. *Detection:* Red-fluorescent goat anti-rabbit IgG cross-adsorbed Antibody DyLight 594 used at a dilution of 1:100.

**Detection of human BRD2 by immunohistochemistry.**

Sample: FFPE section of human stomach carcinoma.

Antibody: Affinity purified rabbit anti-BRD2 (Cat. No. IHC-00612 lot 3) used at a dilution of 1:250. *Detection:* DAB