

CROP/Luc7A IHC Antibody

Rabbit Polyclonal

Antigen Affinity Purified

Protein ID NP_057508.2

Catalog No. IHC-00600

GeneID 51747

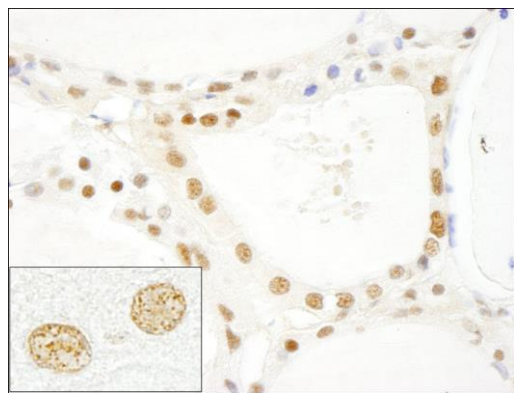
Lot No. IHC-00600-1



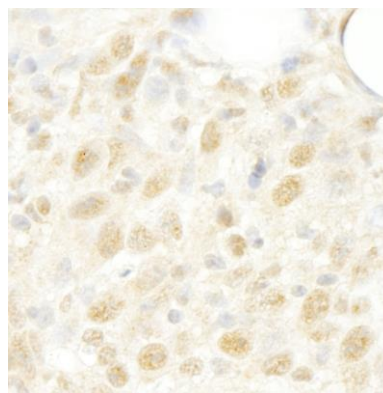
APPLICATIONS	IHC
SPECIES REACTIVITY	Human, Mouse
PRESUMED REACTIVITY	Based on 100% sequence identity, this antibody is predicted to react with Rat, Chicken, Bovine, Dog, Rabbit, Pig, Panda, Orangutan, Monkey, Gorilla, Chimpanzee, Nile tilapia and Tasmanian devil
AMOUNT	100 µl
CONCENTRATION	250 µg/ml
STORAGE/SHELF LIFE	2 – 8° C / 1 year from date of receipt
PHYSICAL STATE	Liquid
BUFFER	Tris-buffered Saline containing 0.1% BSA and 0.09% Sodium Azide
ISOTYPE	IgG
ORIGIN	USA
PRODUCTION PROCEDURES	<p>Antibody was affinity purified using an epitope specific to CROP/Luc7A immobilized on solid support.</p> <p>The epitope recognized by IHC-00600 maps to a region between residue 1 and 50 of human cisplatin resistance-associated overexpressed protein using the numbering given in entry NP_057508.2 (GeneID 51747).</p> <p>Immunoglobulin concentration was determined by extinction coefficient: absorbance at 280 nm of 1.4 equals 1.0 mg of IgG.</p>
APPLICATIONS	<p>Centrifuge tube to remove product from lid. Optimal working dilutions should be determined experimentally by the investigator. Prepare working dilution immediately before use.</p> <p>Immunohistochemistry 1:100 – 1:500</p>
APPLICATION NOTES	<p>Epitope exposure is recommended.</p> <p>Epitope exposure with citrate buffer will enhance staining.</p> <p>Likely to work with frozen sections.</p>
IHC HUMAN CONTROLS	<p>In some cases, the antibody may be diluted further than indicated.</p> <p>Anaplastic Thyroid Carcinoma, Breast Carcinoma, Skin Squamous Cell Carcinoma, Testicular Seminoma</p>
IHC MOUSE CONTROLS	Colon Carcinoma CT26
ADDITIONAL INFO	<p>https://www.bethyl.com/product/IHC-00600</p> <p>Use the link above to view SDS, a current list of citations, and other product specific information.</p>

This document certifies that this product has met all of the quality control standards defined by Bethyl Laboratories, Inc.
Eric McIntush, PhD | Chief Scientific Officer

Date: June 21, 2019



Detection of human CROP/Luc7A by immunohistochemistry. *Sample:* FFPE section of human thyroid carcinoma. *Antibody:* Affinity purified rabbit anti-CROP/Luc7A (Cat. No. IHC-00600) used at a dilution of 1:250. *Detection:* DAB



Detection of mouse CROP/Luc7A by immunohistochemistry. *Sample:* FFPE section of mouse colon carcinoma CT26. *Antibody:* Affinity purified rabbit anti-CROP/Luc7A (Cat. No. IHC-00600) used at a dilution of 1:250. *Detection:* DAB