

PRKAR2A/PKA-R11alpha IHC Antibody

Rabbit Polyclonal

Antigen Affinity Purified

Protein ID NP_004148.1

Catalog No. IHC-00599

GeneID 5576

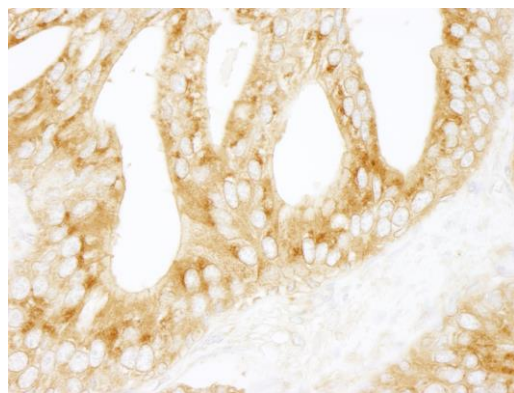
Lot No. IHC-00599-1



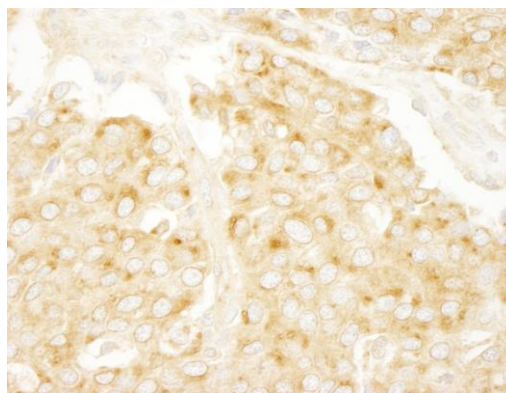
APPLICATIONS	IHC
SPECIES REACTIVITY	Human
PRESUMED REACTIVITY	Based on 100% sequence identity, this antibody is predicted to react with Monkey, Gorilla, Northern white-cheeked gibbon and Crab-eating macaque
AMOUNT	100 µl
CONCENTRATION	100 µg/ml
STORAGE/SHELF LIFE	2 – 8° C / 1 year from date of receipt
PHYSICAL STATE	Liquid
BUFFER	Tris-buffered Saline containing 0.1% BSA and 0.09% Sodium Azide
ISOTYPE	IgG
ORIGIN	USA
PRODUCTION PROCEDURES	<p>Antibody was affinity purified using an epitope specific to PRKAR2A/PKA-R11alpha immobilized on solid support.</p> <p>The epitope recognized by IHC-00599 maps to a region between residue 50 and 100 of human protein kinase, cAMP-dependent, regulatory, type II, alpha using the numbering given in entry NP_004148.1 (GeneID 5576).</p> <p>Immunoglobulin concentration was determined by extinction coefficient: absorbance at 280 nm of 1.4 equals 1.0 mg of IgG.</p>
APPLICATIONS	<p>Centrifuge tube to remove product from lid. Optimal working dilutions should be determined experimentally by the investigator. Prepare working dilution immediately before use.</p> <p>Immunohistochemistry 1:100 – 1:500</p>
APPLICATION NOTES	<p>Epitope exposure is recommended.</p> <p>Epitope exposure with citrate buffer will enhance staining.</p> <p>Likely to work with frozen sections.</p> <p>In some cases, the antibody may be diluted further than indicated.</p>
IHC HUMAN CONTROLS	Breast Carcinoma, Colon Carcinoma, Pancreatic Islet Cell Tumor, Prostate Carcinoma
ADDITIONAL INFO	<p>https://www.bethyl.com/product/IHC-00599</p> <p>Use the link above to view SDS, a current list of citations, and other product specific information.</p>

This document certifies that this product has met all of the quality control standards defined by Bethyl Laboratories, Inc.
Eric McIntush, PhD | Chief Scientific Officer

Date: June 21, 2019



Detection of human PRKAR2A/PKA-R11alpha by immunohistochemistry. *Sample:* FFPE section of human prostate carcinoma. *Antibody:* Affinity purified rabbit anti-PRKAR2A/PKA-R11alpha (Cat. No. IHC-00599) used at a dilution of 1:100. *Detection:* DAB



Detection of human PRKAR2A/PKA-R11alpha by immunohistochemistry. *Sample:* FFPE section of human breast carcinoma. *Antibody:* Affinity purified rabbit anti-PRKAR2A/PKA-R11alpha (Cat. No. IHC-00599) used at a dilution of 1:100. *Detection:* DAB