

GBF1 IHC Antibody

Rabbit Polyclonal

Antigen Affinity Purified

Protein ID NP_004184.1

Catalog No. IHC-00595

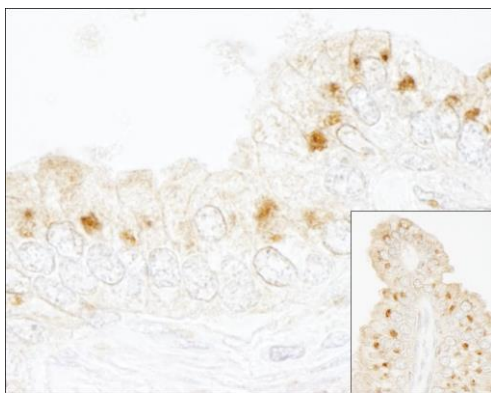
GeneID 8729

Lot No. IHC-00595-1

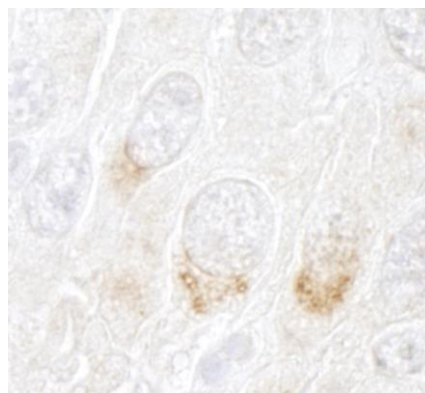


APPLICATIONS	IHC
SPECIES REACTIVITY	Human, Mouse
PRESUMED REACTIVITY	Based on 100% sequence identity, this antibody is predicted to react with Rat, Guinea pig_10141, Orangutan, Monkey, Chimpanzee, thirteen-lined ground squirrel, Small-eared galago and Chinese hamster
AMOUNT	100 µl
CONCENTRATION	250 µg/ml
STORAGE/SHELF LIFE	2 - 8° C / 1 year from date of receipt
PHYSICAL STATE	Liquid
BUFFER	Tris-buffered Saline containing 0.1% BSA and 0.09% Sodium Azide
ISOTYPE	IgG
ORIGIN	USA
PRODUCTION PROCEDURES	Antibody was affinity purified using an epitope specific to GBF1 immobilized on solid support. The epitope recognized by IHC-00595 maps to a region between residue 1809 and 1859 of human golgi-specific brefeldin A resistance factor 1 using the numbering given in entry NP_004184.1 (GeneID 8729). Immunoglobulin concentration was determined by extinction coefficient: absorbance at 280 nm of 1.4 equals 1.0 mg of IgG.
APPLICATIONS	Centrifuge tube to remove product from lid. Optimal working dilutions should be determined experimentally by the investigator. Prepare working dilution immediately before use. Immunohistochemistry 1:100 - 1:500
APPLICATION NOTES	Epitope exposure is recommended. Epitope exposure with citrate or tris-EDTA pH9.0 buffer will enhance staining. Likely to work with frozen sections. In some cases, the antibody may be diluted further than indicated.
IHC HUMAN CONTROLS	Colon Carcinoma, Prostate Carcinoma
IHC MOUSE CONTROLS	Squamous Cell Carcinoma
ADDITIONAL INFO	https://www.bethyl.com/product/IHC-00595 Use the link above to view SDS, a current list of citations, and other product specific information.

This document certifies that this product has met all of the quality control standards defined by Bethyl Laboratories, Inc.
Eric McIntush, PhD | Chief Scientific Officer Date: June 21, 2019



Detection of human GBF1 by immunohistochemistry.
Sample: FFPE section of human prostate carcinoma.
Antibody: Affinity purified rabbit anti-GBF1 (Cat. No. IHC-00595) used at a dilution of 1:250. *Detection:* DAB



Detection of mouse GBF1 by immunohistochemistry.
Sample: FFPE section of mouse squamous cell carcinoma.
Antibody: Affinity purified rabbit anti-GBF1 (Cat. No. IHC-00595) used at a dilution of 1:250. *Detection:* DAB