

# beta Catenin IHC Antibody

Rabbit Polyclonal

Antigen Affinity Purified

Protein ID NP\_001895.1

Catalog No. IHC-00584

GeneID 1499

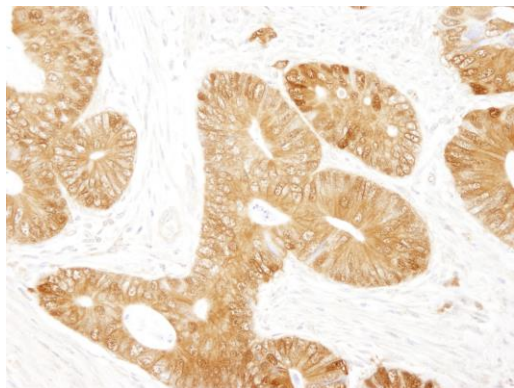
Lot No. IHC-00584-1



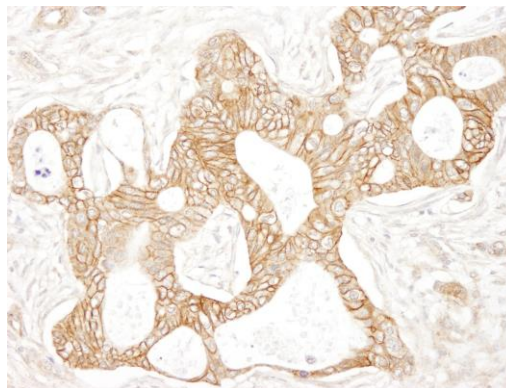
<b>APPLICATIONS</b>	IHC
<b>SPECIES REACTIVITY</b>	Human, Mouse
<b>PRESUMED REACTIVITY</b>	Based on 100% sequence identity, this antibody is predicted to react with Rat, Zebrafish, X. laevis, X. tropicalis, Chicken, Bovine, Dog, Horse, Rabbit, Guinea pig_10141, Pig, Panda and Orangutan
<b>AMOUNT</b>	100 µl
<b>CONCENTRATION</b>	250 µg/ml
<b>STORAGE/SHELF LIFE</b>	2 - 8° C / 1 year from date of receipt
<b>PHYSICAL STATE</b>	Liquid
<b>BUFFER</b>	Tris-buffered Saline containing 0.1% BSA and 0.09% Sodium Azide
<b>ORIGIN</b>	USA
<b>PRODUCTION PROCEDURES</b>	Antibody was affinity purified using an epitope specific to beta Catenin immobilized on solid support.  The epitope recognized by IHC-00584 maps to a region between residue 760 and 781 of human beta-catenin using the numbering given in entry NP_001895.1 (GeneID 1499).  Immunoglobulin concentration was determined by extinction coefficient: absorbance at 280 nm of 1.4 equals 1.0 mg of IgG.
<b>APPLICATIONS</b>	Centrifuge tube to remove product from lid. Optimal working dilutions should be determined experimentally by the investigator. Prepare working dilution immediately before use.  Immunohistochemistry 1:100 - 1:500
<b>APPLICATION NOTES</b>	Epitope exposure is recommended.  Epitope exposure with citrate buffer or tris-EDTA pH9.0 buffer will enhance staining.  Likely to work with frozen sections.
<b>IHC HUMAN CONTROLS</b>	In some cases, the antibody may be diluted further than indicated. Anaplastic Thyroid Carcinoma, Breast Carcinoma, Colon Carcinoma, Ovarian Carcinoma, Prostate Carcinoma, Stomach Adenocarcinoma
<b>IHC MOUSE CONTROLS</b>	Teratoma
<b>ADDITIONAL INFO</b>	<a href="https://www.bethyl.com/product/IHC-00584">https://www.bethyl.com/product/IHC-00584</a> Use the link above to view SDS, a current list of citations, and other product specific information.

This document certifies that this product has met all of the quality control standards defined by Bethyl Laboratories, Inc.  
Eric McIntush, PhD | Chief Scientific Officer

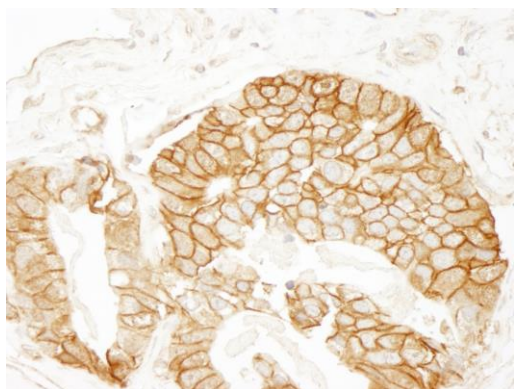
Date: August 16, 2019



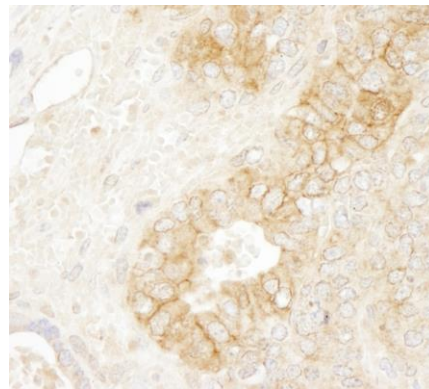
**Detection of human beta Catenin by immunohistochemistry.** *Sample:* FFPE section of human colon carcinoma. *Antibody:* Affinity purified rabbit anti-beta Catenin (Cat. No. IHC-00584) used at a dilution of 1:250. *Detection:* DAB



**Detection of human beta Catenin by immunohistochemistry.** *Sample:* FFPE section of human ovarian carcinoma. *Antibody:* Affinity purified rabbit anti-beta Catenin (Cat. No. IHC-00584) used at a dilution of 1:250. *Detection:* DAB



**Detection of human beta Catenin by immunohistochemistry.** *Sample:* FFPE section of human prostate carcinoma. *Antibody:* Affinity purified rabbit anti-beta Catenin (Cat. No. IHC-00584) used at a dilution of 1:250. *Detection:* DAB



**Detection of mouse beta Catenin by immunohistochemistry.** *Sample:* FFPE section of mouse teratoma. *Antibody:* Affinity purified rabbit anti-beta Catenin (Cat. No. IHC-00584) used at a dilution of 1:250. *Detection:* DAB