

Leo1 IHC Antibody

Rabbit Polyclonal

Antigen Affinity Purified

Protein ID Q8WVC0

Catalog No. IHC-00573

GeneID 123169

Lot No. IHC-00573-1



APPLICATIONS	IHC
SPECIES REACTIVITY	Human, Mouse
PRESUMED REACTIVITY	Based on 100% sequence identity, this antibody is predicted to react with Rat, Bovine, Dog, Horse, Rabbit, Guinea pig_10141, Pig, Panda, Orangutan, Monkey, Gorilla, Chimpanzee and Chinese hamster
AMOUNT	100 µl
CONCENTRATION	100 µg/ml
STORAGE/SHELF LIFE	2 – 8° C / 1 year from date of receipt
PHYSICAL STATE	Liquid
BUFFER	Tris-buffered Saline containing 0.1% BSA and 0.09% Sodium Azide
ISOTYPE	IgG
ORIGIN	USA
PRODUCTION PROCEDURES	<p>Antibody was affinity purified using an epitope specific to Leo1 immobilized on solid support.</p> <p>The epitope recognized by IHC-00573 maps to a region between residues 550 and 600 of human senescence downregulated leo1-like using the numbering given in TrEMBL entry Q8WVC0 (GeneID 123169).</p> <p>Immunoglobulin concentration was determined by extinction coefficient: absorbance at 280 nm of 1.4 equals 1.0 mg of IgG.</p>
APPLICATIONS	<p>Centrifuge tube to remove product from lid. Optimal working dilutions should be determined experimentally by the investigator. Prepare working dilution immediately before use.</p> <p>Immunohistochemistry 1:100 – 1:500</p>
APPLICATION NOTES	<p>Epitope exposure is recommended.</p> <p>Epitope exposure with tris-EDTA pH9.0 buffer will enhance staining.</p> <p>Likely to work with frozen sections.</p>
IHC HUMAN CONTROLS	<p>In some cases, the antibody may be diluted further than indicated.</p> <p>Breast Carcinoma, Hodgkins Lymphoma, Stomach Adenocarcinoma</p>
IHC MOUSE CONTROLS	Colon Carcinoma CT26, Teratoma
ADDITIONAL INFO	<p>https://www.bethyl.com/product/IHC-00573</p> <p>Use the link above to view SDS, a current list of citations, and other product specific information.</p>

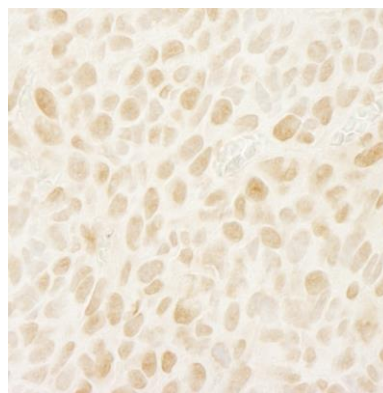
This document certifies that this product has met all of the quality control standards defined by Bethyl Laboratories, Inc.
Eric McIntush, PhD | Chief Scientific Officer

Date: June 21, 2019

**Detection of human Leo1 by immunohistochemistry.**

Sample: FFPE section of human stomach adenocarcinoma.

Antibody: Affinity purified rabbit anti-Leo1 (Cat. No. IHC-00573) used at a dilution of 1:100. *Detection:* DAB

**Detection of mouse Leo1 by immunohistochemistry.**

Sample: FFPE section of mouse colon carcinoma CT26.

Antibody: Affinity purified rabbit anti-Leo1 (Cat. No. IHC-00573) used at a dilution of 1:100. *Detection:* DAB