

BIG2/ARFGEF2 IHC Antibody

Rabbit Polyclonal

Antigen Affinity Purified

Protein ID NP_006411.1

Catalog No. IHC-00545

GeneID 10564

Lot No. IHC-00545-1



| | |
|------------------------------|--|
| APPLICATIONS | IHC |
| SPECIES REACTIVITY | Human |
| PRESUMED REACTIVITY | Based on 100% sequence identity, this antibody is predicted to react with Orangutan, Monkey, Gorilla, Chimpanzee and Crab-eating macaque |
| AMOUNT | 100 µl |
| CONCENTRATION | 250 µg/ml |
| STORAGE/SHELF LIFE | 2 – 8° C / 1 year from date of receipt |
| PHYSICAL STATE | Liquid |
| BUFFER | Tris-buffered Saline containing 0.1% BSA and 0.09% Sodium Azide |
| ISOTYPE | IgG |
| ORIGIN | USA |
| PRODUCTION PROCEDURES | Antibody was affinity purified using an epitope specific to BIG2/ARFGEF2 immobilized on solid support. |

The epitope recognized by IHC-00545 maps to a region between residue 300 and 350 of human brefeldin A-inhibited 2 (ADP-ribosylation factor guanine nucleotide-exchange factor 2) using the numbering given in entry NP_006411.1 (GeneID 10564).

Immunoglobulin concentration was determined by extinction coefficient: absorbance at 280 nm of 1.4 equals 1.0 mg of IgG.

APPLICATIONS Centrifuge tube to remove product from lid. Optimal working dilutions should be determined experimentally by the investigator. Prepare working dilution immediately before use.

Immunohistochemistry 1:100 – 1:500

APPLICATION NOTES Epitope exposure is recommended.

Epitope exposure with citrate buffer will enhance staining.

Likely to work with frozen sections.

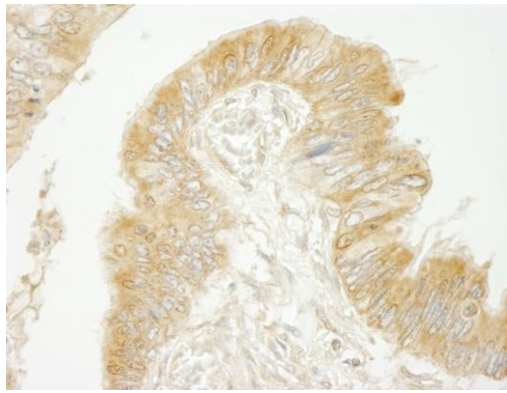
In some cases, the antibody may be diluted further than indicated.

IHC HUMAN CONTROLS Colon Carcinoma, Laryngeal Squamous Cell Carcinoma, Ovarian Carcinoma, Stomach Adenocarcinoma, Testicular Seminoma

ADDITIONAL INFO <https://www.bethyl.com/product/IHC-00545>

Use the link above to view SDS, a current list of citations, and other product specific information.

This document certifies that this product has met all of the quality control standards defined by Bethyl Laboratories, Inc.
Eric McIntush, PhD | Chief Scientific Officer Date: June 21, 2019



Detection of human BIG2/ARFGEF2 by immunohistochemistry. *Sample:* FFPE section of human colon carcinoma. *Antibody:* Affinity purified rabbit anti-BIG2/ARFGEF2 (Cat. No. IHC-00545) used at a dilution of 1:250. *Detection:* DAB