

REDD1 IHC Antibody

Rabbit Polyclonal

Antigen Affinity Purified

Protein ID NP_061931.1

Catalog No. IHC-00542

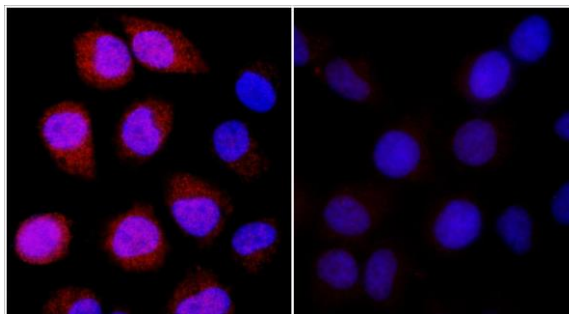
GeneID 54541

Lot No. IHC-00542-1



APPLICATIONS	ICC-IF
SPECIES REACTIVITY	Human
PRESUMED REACTIVITY	Based on 100% sequence identity, this antibody is predicted to react with Mouse, Rat, Bovine, Dog, Horse, Rabbit, Panda, Orangutan, Monkey, Gorilla, Chimpanzee and Chinese hamster
AMOUNT	100 µl
CONCENTRATION	250 µg/ml
STORAGE/SHELF LIFE	2 – 8° C / 1 year from date of receipt
PHYSICAL STATE	Liquid
BUFFER	Tris-buffered Saline containing 0.1% BSA and 0.09% Sodium Azide
ISOTYPE	IgG
ORIGIN	USA
PRODUCTION PROCEDURES	<p>Antibody was affinity purified using an epitope specific to REDD1 immobilized on solid support.</p> <p>The epitope recognized by IHC-00542 maps to a region between residue 1 and 50 of human protein regulated in development and DNA damage response 1 (DNA-damage-inducible transcript 4) using the numbering given in entry NP_061931.1 (GeneID 54541).</p> <p>Immunoglobulin concentration was determined by extinction coefficient: absorbance at 280 nm of 1.4 equals 1.0 mg of IgG.</p>
APPLICATIONS	<p>Centrifuge tube to remove product from lid. Optimal working dilutions should be determined experimentally by the investigator. Prepare working dilution immediately before use.</p> <p>Immunofluorescence 1:100 – 1:500 (ICC)</p>
APPLICATION NOTES	Formaldehyde-Fixed Cells 1:100 – 1:500: Permeabilization with Triton-X 100 is recommended
IHC HUMAN CONTROLS	HeLa Cells
ADDITIONAL INFO	<p>https://www.bethyl.com/product/IHC-00542</p> <p>Use the link above to view SDS, a current list of citations, and other product specific information.</p>

This document certifies that this product has met all of the quality control standards defined by Bethyl Laboratories, Inc.
Eric McIntush, PhD | Chief Scientific Officer Date: June 21, 2019

**Detection of human REDD1 by immunocytochemistry.**

Sample: NBF-fixed asynchronous HeLa cells. Cobalt treated cells (left) or mock treated cells (right) immunostained for REDD1. *Antibody:* Affinity purified rabbit anti-REDD1 (Cat. No. IHC-00542) used at a dilution of 1:100. *Detection:* Red-fluorescent goat anti-rabbit IgG H&L cross-adsorbed Antibody DyLight®594 used at a dilution of 1:100.