

CSTF2T/TauCSTF64 IHC Antibody

Rabbit Polyclonal

Antigen Affinity Purified

Protein ID NP_056050.1

Catalog No. IHC-00530

GeneID 23283

Lot No. IHC-00530-1



APPLICATIONS	IHC
SPECIES REACTIVITY	Human
PRESUMED REACTIVITY	Based on 100% sequence identity, this antibody is predicted to react with Mouse, Rat, Dog, Horse, Rabbit, Guinea pig_10141, Pig, Panda, Orangutan, Gorilla, Chimpanzee, Chinese hamster and Naked mole rat
AMOUNT	100 µl
CONCENTRATION	250 µg/ml
STORAGE/SHELF LIFE	2 – 8° C / 1 year from date of receipt
PHYSICAL STATE	Liquid
BUFFER	Tris-buffered Saline containing 0.1% BSA and 0.09% Sodium Azide
ISOTYPE	IgG
ORIGIN	USA
PRODUCTION PROCEDURES	Antibody was affinity purified using an epitope specific to CSTF2T/TauCSTF64 immobilized on solid support.

The epitope recognized by IHC-00530 maps to a region between residue 566 and 616 of human cleavage stimulation factor 64 kDa subunit, tau variant using the numbering given in entry NP_056050.1 (GeneID 23283).

Immunoglobulin concentration was determined by extinction coefficient: absorbance at 280 nm of 1.4 equals 1.0 mg of IgG.

APPLICATIONS Centrifuge tube to remove product from lid. Optimal working dilutions should be determined experimentally by the investigator. Prepare working dilution immediately before use.

Immunohistochemistry 1:100 – 1:500

APPLICATION NOTES Epitope exposure is recommended.

Epitope exposure with citrate buffer will enhance staining.

Likely to work with frozen sections.

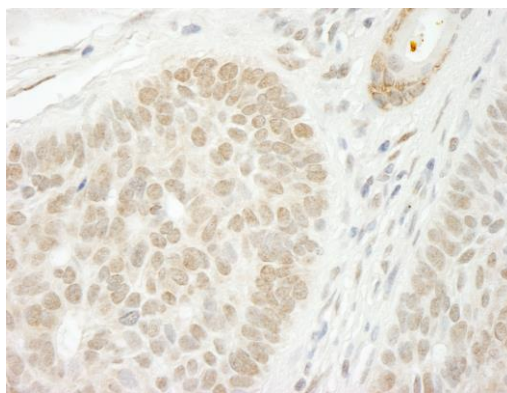
In some cases, the antibody may be diluted further than indicated.

IHC HUMAN CONTROLS Anaplastic Thyroid Carcinoma, Breast Carcinoma, Hodgkins Lymphoma, Linitis Plastica Stomach Cancer, Skin Basal Cell Carcinoma

ADDITIONAL INFO <https://www.bethyl.com/product/IHC-00530>

Use the link above to view SDS, a current list of citations, and other product specific information.

This document certifies that this product has met all of the quality control standards defined by Bethyl Laboratories, Inc.
Eric McIntush, PhD | Chief Scientific Officer Date: June 21, 2019



Detection of human CSTF2T/TauCSTF64 immunohistochemistry. *Sample:* FFPE section of human skin squamous cell carcinoma. *Antibody:* Affinity purified rabbit anti-CSTF2T/TauCSTF64 (Cat. No. IHC-00530) used at a dilution of 1:250. *Detection:* DAB