

Phospho RelA (S468) IHC Antibody

Rabbit Polyclonal

Antigen Affinity Purified

Protein ID NP_068810.2

Catalog No. IHC-00525

GeneID 5970

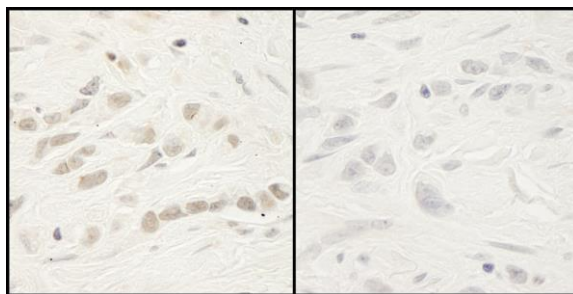
Lot No. IHC-00525-1



APPLICATIONS	IHC
SPECIES REACTIVITY	Human
PRESUMED REACTIVITY	Based on 100% sequence identity, this antibody is predicted to react with Mouse, Rat, Bovine, Dog, Horse, Guinea pig_10141, Pig, Panda, Orangutan, Monkey, Gorilla and Chimpanzee
AMOUNT	100 µl
CONCENTRATION	250 µg/ml
STORAGE/SHELF LIFE	2 – 8° C / 1 year from date of receipt
PHYSICAL STATE	Liquid
BUFFER	Tris-buffered Saline containing 0.1% BSA and 0.09% Sodium Azide
ISOTYPE	IgG
ORIGIN	USA
PRODUCTION PROCEDURES	<p>Antibody was affinity purified using an epitope specific to Phospho RelA (S468) immobilized on solid support.</p> <p>The epitope recognized by IHC-00525 maps to a region of human v-rel reticuloendotheliosis viral oncogene homolog A surrounding serine 468 when serine 468 is phosphorylated using the numbering given in entry NP_068810.2 (GeneID 5970).</p> <p>Immunoglobulin concentration was determined by extinction coefficient: absorbance at 280 nm of 1.4 equals 1.0 mg of IgG.</p>
APPLICATIONS	<p>Centrifuge tube to remove product from lid. Optimal working dilutions should be determined experimentally by the investigator. Prepare working dilution immediately before use.</p> <p>Immunohistochemistry 1:100 – 1:500</p>
APPLICATION NOTES	<p>Epitope exposure is recommended.</p> <p>Epitope exposure with tris-EDTA pH9.0 buffer will enhance staining.</p> <p>Likely to work with frozen sections.</p> <p>In some cases, the antibody may be diluted further than indicated.</p>
IHC HUMAN CONTROLS	Breast Carcinoma, Linitis Plastica Stomach Cancer
ADDITIONAL INFO	<p>https://www.bethyl.com/product/IHC-00525</p> <p>Use the link above to view SDS, a current list of citations, and other product specific information.</p>

This document certifies that this product has met all of the quality control standards defined by Bethyl Laboratories, Inc.
Eric McIntush, PhD | Chief Scientific Officer

Date: June 21, 2019



Detection of human Phospho-RelA (S468) by immunohistochemistry. *Samples:* FFPE serial sections of human linitis plastica stomach cancer. Mock phosphatase treated section (left) or calf intestinal phosphatase-treated section (right) immunostained for Phospho-RelA (S468). *Antibody:* Affinity purified rabbit anti-Phospho-RelA (S468) (Cat. No. IHC-00525) used at a dilution of 1:250. *Detection:* DAB