

# DTL/CDT2 IHC Antibody

Rabbit Polyclonal

Antigen Affinity Purified

Protein ID NP\_057532.1

Catalog No. IHC-00495

GeneID 51514

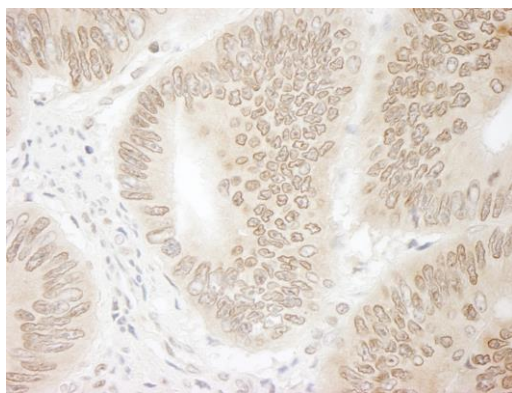
Lot No. IHC-00495-1



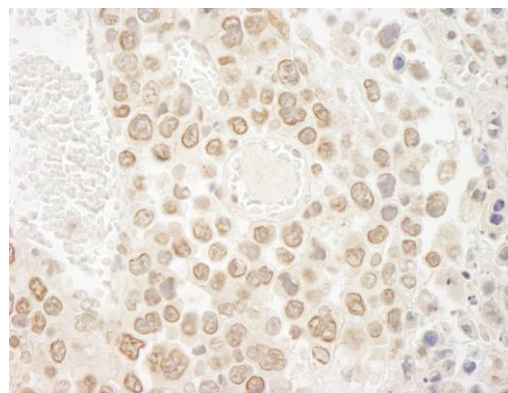
|                              |  |
|------------------------------|--|
| <b>APPLICATIONS</b>          | IHC  |
| <b>SPECIES REACTIVITY</b>    | Human, Mouse   |
| <b>PRESUMED REACTIVITY</b>   | Based on 100% sequence identity, this antibody is predicted to react with Orangutan, Monkey, Gorilla, Chimpanzee, Northern white-cheeked gibbon and Crab-eating macaque  |
| <b>AMOUNT</b>                | 100 µl   |
| <b>CONCENTRATION</b>         | 200 µg/ml  |
| <b>STORAGE/SHELF LIFE</b>    | 2 – 8° C / 1 year from date of receipt   |
| <b>PHYSICAL STATE</b>        | Liquid   |
| <b>BUFFER</b>                | Tris-buffered Saline containing 0.1% BSA and 0.09% Sodium Azide  |
| <b>ISOTYPE</b>               | IgG  |
| <b>ORIGIN</b>                | USA  |
| <b>PRODUCTION PROCEDURES</b> | <p>Antibody was affinity purified using an epitope specific to DTL/CDT2 immobilized on solid support.</p> <p>The epitope recognized by IHC-00495 maps to a region between residue 680 and the C-terminus (residue 730) of human Denticless Homolog (Chromatin Licensing and DNA Replicating Factor 2) using the numbering given in entry NP_057532.1 (GeneID 51514).</p> <p>Immunoglobulin concentration was determined by extinction coefficient: absorbance at 280 nm of 1.4 equals 1.0 mg of IgG.</p> |
| <b>APPLICATIONS</b>          | <p>Centrifuge tube to remove product from lid. Optimal working dilutions should be determined experimentally by the investigator. Prepare working dilution immediately before use.</p> <p>Immunohistochemistry 1:100 – 1:500</p>   |
| <b>APPLICATION NOTES</b>     | <p>Epitope exposure is recommended.</p> <p>Epitope exposure with tris-EDTA pH9.0 buffer will enhance staining.</p> <p>Likely to work with frozen sections.</p> <p>In some cases, the antibody may be diluted further than indicated.</p>   |
| <b>IHC HUMAN CONTROLS</b>    | Breast Carcinoma, Colon Carcinoma, Stomach Adenocarcinoma  |
| <b>IHC MOUSE CONTROLS</b>    | Renal Cell Carcinoma   |
| <b>ADDITIONAL INFO</b>       | <p><a href="https://www.bethyl.com/product/IHC-00495">https://www.bethyl.com/product/IHC-00495</a></p> <p>Use the link above to view SDS, a current list of citations, and other product specific information.</p>   |

This document certifies that this product has met all of the quality control standards defined by Bethyl Laboratories, Inc.  
Eric McIntush, PhD | Chief Scientific Officer

Date: June 21, 2019



**Detection of human DTL/CDT2 by immunohistochemistry.** *Sample:* FFPE section of human colon carcinoma. *Antibody:* Affinity purified rabbit anti-DTL/CDT2 (Cat. No. IHC-00495) used at a dilution of 1:250. *Detection:* DAB



**Detection of mouse DTL/CDT2 by immunohistochemistry.** *Sample:* FFPE section of mouse hybridoma tumor. *Antibody:* Affinity purified rabbit anti-DTL/CDT2 (Cat. No. IHC-00495) used at a dilution of 1:250. *Detection:* DAB