

DOT1L IHC Antibody

Rabbit Polyclonal

Antigen Affinity Purified

Protein ID NP_115871.1

Catalog No. IHC-00494

GeneID 84444

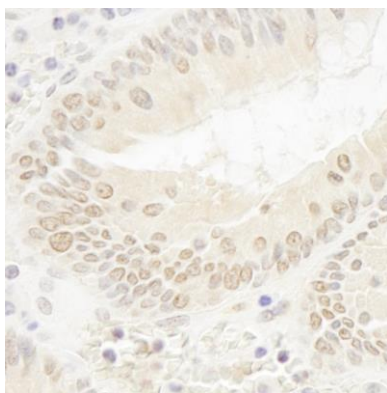
Lot No. IHC-00494-1



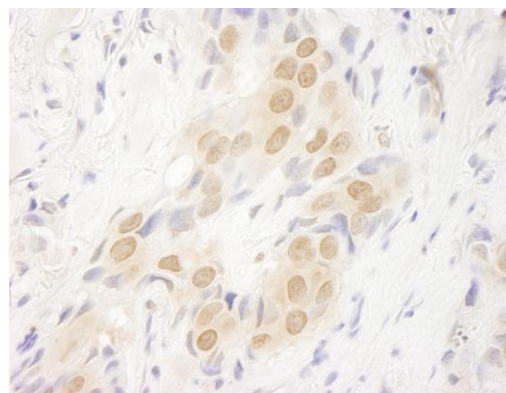
APPLICATIONS	IHC
SPECIES REACTIVITY	Human
PRESUMED REACTIVITY	Based on 100% sequence identity, this antibody is predicted to react with Orangutan, Monkey, Northern white-cheeked gibbon and White-tufted-ear marmoset
AMOUNT	100 µl
CONCENTRATION	100 µg/ml
STORAGE/SHELF LIFE	2 – 8° C / 1 year from date of receipt
PHYSICAL STATE	Liquid
BUFFER	Tris-buffered Saline containing 0.1% BSA and 0.09% Sodium Azide
ISOTYPE	IgG
ORIGIN	USA
PRODUCTION PROCEDURES	<p>Antibody was affinity purified using an epitope specific to DOT1L immobilized on solid support.</p> <p>The epitope recognized by IHC-00494 maps to a region between residue 1000 and 1050 of human DOT1-Like using the numbering given in entry NP_115871.1 (GeneID 84444).</p> <p>Immunoglobulin concentration was determined by extinction coefficient: absorbance at 280 nm of 1.4 equals 1.0 mg of IgG.</p>
APPLICATIONS	<p>Centrifuge tube to remove product from lid. Optimal working dilutions should be determined experimentally by the investigator. Prepare working dilution immediately before use.</p> <p>Immunohistochemistry 1:100 – 1:500</p>
APPLICATION NOTES	<p>Epitope exposure is recommended.</p> <p>Epitope exposure with tris-EDTA pH9.0 buffer will enhance staining.</p> <p>Likely to work with frozen sections.</p>
IHC HUMAN CONTROLS	<p>In some cases, the antibody may be diluted further than indicated.</p> <p>Breast Carcinoma, Colon Carcinoma, Non-Small Cell Lung Cancer, Ovarian Carcinoma, Prostate Carcinoma</p>
ADDITIONAL INFO	<p>https://www.bethyl.com/product/IHC-00494</p> <p>Use the link above to view SDS, a current list of citations, and other product specific information.</p>

This document certifies that this product has met all of the quality control standards defined by Bethyl Laboratories, Inc.
Eric McIntush, PhD | Chief Scientific Officer

Date: June 21, 2019

**Detection of human DOT1L by immunohistochemistry.**

Sample: FFPE section of human colon carcinoma. *Antibody:* Affinity purified rabbit anti-DOT1L (Cat. No. IHC-00494) used at a dilution of 1:100. *Detection:* DAB

**Detection of human DOT1L by immunohistochemistry.**

Sample: FFPE section of human breast carcinoma. *Antibody:* Affinity purified rabbit anti-DOT1L (Cat. No. IHC-00494) used at a dilution of 1:100. *Detection:* DAB