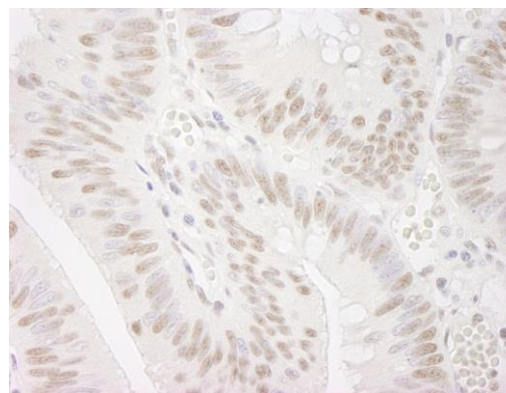
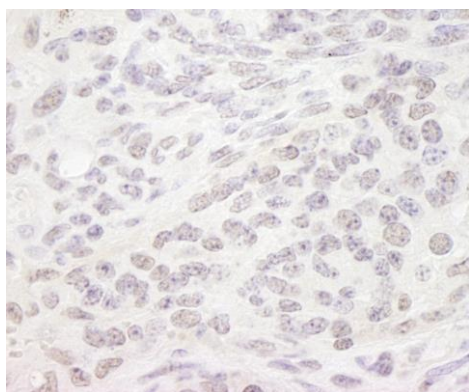


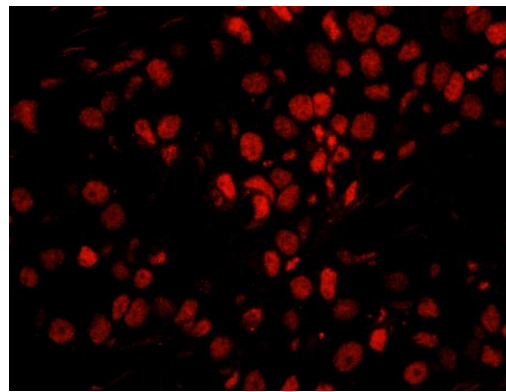
**Detection of human PPP4R3 Alpha by immunohistochemistry.** *Sample:* FFPE section of human stomach carcinoma. *Antibody:* Affinity purified rabbit anti-PPP4R3 Alpha (Cat. No. IHC-00469) used at a dilution of 1:250. *Detection:* DAB



**Detection of human PPP4R3 Alpha by immunohistochemistry.** *Sample:* FFPE section of human colon carcinoma. *Antibody:* Affinity purified rabbit anti-PPP4R3 Alpha (Cat. No. IHC-00469) used at a dilution of 1:250. *Detection:* DAB



**Detection of mouse PPP4R3 Alpha by immunohistochemistry.** *Sample:* FFPE section of mouse teratoma. *Antibody:* Affinity purified rabbit anti-PPP4R3 Alpha (Cat. No. IHC-00469) used at a dilution of 1:250. *Detection:* DAB



**Detection of human PPP4R3 Alpha by immunohistochemistry.** *Sample:* FFPE section of human breast carcinoma. *Antibody:* Affinity purified rabbit anti-PPP4R3 Alpha (Cat. No. IHC-00469) used at a dilution of 1:250. *Detection:* Red-fluorescent goat anti-rabbit IgG highly cross-adsorbed Antibody used at a dilution of 1:100.