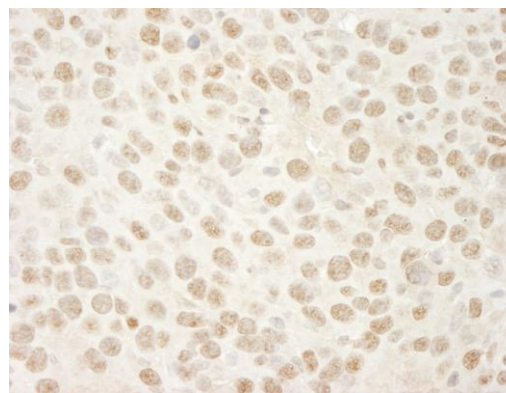


Detection of human BRG1/SMARCA4 by immunohistochemistry. *Sample:* FFPE section of human non-small cell lung cancer. *Antibody:* Affinity purified rabbit anti-BRG1/SMARCA4 (Cat. No. IHC-00466) used at a dilution of 1:250. *Detection:* DAB



Detection of mouse BRG1/SMARCA4 by immunohistochemistry. *Sample:* FFPE section of mouse colon carcinoma. *Antibody:* Affinity purified rabbit anti-BRG1/SMARCA4 (Cat. No. IHC-00466) used at a dilution of 1:250. *Detection:* DAB