

Histone H3 IHC Antibody

Rabbit Polyclonal

Antigen Affinity Purified

Protein ID NP_003520.1

Catalog No. IHC-00465

GeneID 8350

Lot No. IHC-00465-1



APPLICATIONS	IHC, IHC-IF
SPECIES REACTIVITY	Human, Mouse
PRESUMED REACTIVITY	Based on 100% sequence identity, this antibody is predicted to react with Rat, D. melanogaster, Zebrafish, X. laevis, X. tropicalis, Chicken, Bovine, Rabbit, Pig, Orangutan and Italian ryegrass
AMOUNT	100 µl
CONCENTRATION	50 µg/ml
STORAGE/SHELF LIFE	2 – 8° C / 1 year from date of receipt
PHYSICAL STATE	Liquid
BUFFER	Tris-buffered Saline containing 0.1% BSA and 0.09% Sodium Azide
ISOTYPE	IgG
ORIGIN	USA
PRODUCTION PROCEDURES	Antibody was affinity purified using an epitope specific to Histone H3 immobilized on solid support.

The epitope recognized by IHC-00465 maps to a region between residue 100 and the C-terminus (residue 135) of human Histone H3 using the numbering given in entry NP_003520.1 (GeneID 8350).

Immunoglobulin concentration was determined by extinction coefficient: absorbance at 280 nm of 1.4 equals 1.0 mg of IgG.

APPLICATIONS Centrifuge tube to remove product from lid. Optimal working dilutions should be determined experimentally by the investigator. Prepare working dilution immediately before use.

Immunohistochemistry 1:100 – 1:500

Immunofluorescence 1:50 – 1:500
(IHC)

APPLICATION NOTES Epitope exposure is recommended.

Epitope exposure with tris-EDTA pH9.0 buffer will enhance staining.

Likely to work with frozen sections.

In some cases, the antibody may be diluted further than indicated.

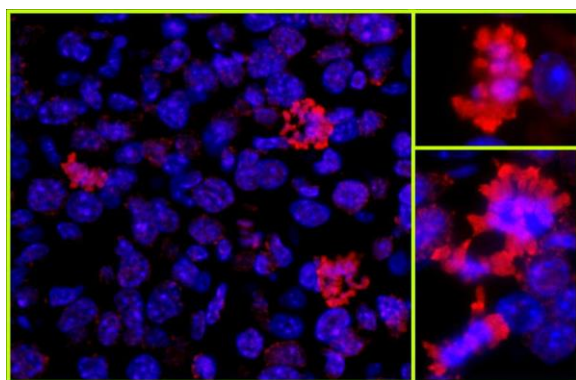
IHC HUMAN CONTROLS Breast Carcinoma, Colon Carcinoma, Linitis Plastica Stomach Cancer, Non-Small Cell Lung Cancer, Ovarian Carcinoma, Prostate Carcinoma, Stomach Adenocarcinoma, Testicular Seminoma

IHC MOUSE CONTROLS Colon Carcinoma CT26, Renal Cell Carcinoma, Teratoma

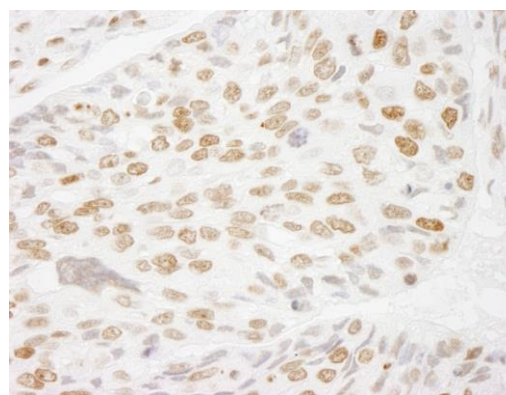
ADDITIONAL INFO <https://www.bethyl.com/product/IHC-00465>

Use the link above to view SDS, a current list of citations, and other product specific information.

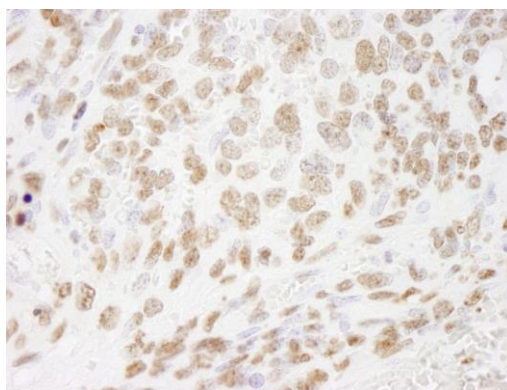
This document certifies that this product has met all of the quality control standards defined by Bethyl Laboratories, Inc.
Eric McIntush, PhD | Chief Scientific Officer Date: June 21, 2019



Detection of mouse Histone H3 by immunohistochemistry. *Sample:* FFPE section of mouse colon carcinoma. *Antibody:* Affinity purified rabbit anti-Histone H3 (Cat. No. IHC-00465) used at a dilution of 1:100. *Detection:* Red-fluorescent goat anti-rabbit IgG highly cross-adsorbed Antibody Hilyte Plus™ 555 used at a dilution of 1:100.



Detection of human Histone H3 by immunohistochemistry. *Sample:* FFPE section of human non-small cell lung cancer. *Antibody:* Affinity purified rabbit anti-Histone H3 (Cat. No. IHC-00465) used at a dilution of 1:250. *Detection:* DAB



Detection of mouse Histone H3 by immunohistochemistry. *Sample:* FFPE section of mouse teratoma. *Antibody:* Affinity purified rabbit anti-Histone H3 (Cat. No. IHC-00465) used at a dilution of 1:250. *Detection:* DAB