

eIF2alpha/EIF2S1 IHC Antibody

Rabbit Polyclonal

Antigen Affinity Purified Protein ID NP_004085.1

Catalog No. IHC-00456 GeneID 1965

Lot No. IHC-00456-1



APPLICATIONS	IHC, IHC-IF
SPECIES REACTIVITY	Human, Mouse
PRESUMED REACTIVITY	Based on 100% sequence identity, this antibody is predicted to react with Rat, Bovine, Dog, Rabbit, Guinea pig_10141, Pig, Panda, Orangutan, Monkey, Gorilla, Chimpanzee and African elephant
AMOUNT	100 µl
CONCENTRATION	100 µg/ml
STORAGE/SHELF LIFE	2 - 8° C / 1 year from date of receipt
PHYSICAL STATE	Liquid
BUFFER	Tris-buffered Saline containing 0.1% BSA and 0.09% Sodium Azide
ORIGIN	USA
PRODUCTION PROCEDURES	Antibody was affinity purified using an epitope specific to eIF2alpha/EIF2S1 immobilized on solid support.

The epitope recognized by IHC-00456 maps to a region between residue 275 and the C-terminus (residue 315) of human Eukaryotic Translation Initiation Factor 2, subunit 1 alpha, 35kDa using the numbering given in entry NP_004085.1 (GeneID 1965).

Immunoglobulin concentration was determined by extinction coefficient: absorbance at 280 nm of 1.4 equals 1.0 mg of IgG.

APPLICATIONS Centrifuge tube to remove product from lid. Optimal working dilutions should be determined experimentally by the investigator. Prepare working dilution immediately before use.

Immunohistochemistry 1:100 - 1:500

Immunofluorescence 1:50 - 1:500
(IHC)

APPLICATION NOTES Epitope exposure is recommended.

Epitope exposure with tris-EDTA pH9.0 buffer will enhance staining.

Likely to work with frozen sections.

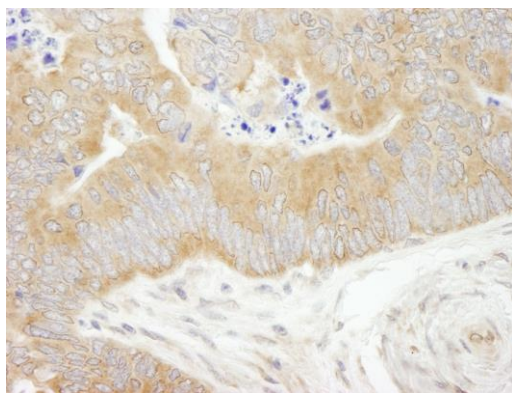
In some cases, the antibody may be diluted further than indicated.

IHC HUMAN CONTROLS Breast Carcinoma, Colon Carcinoma, Non-Small Cell Lung Cancer, Ovarian Carcinoma, Prostate Carcinoma, Testicular Seminoma

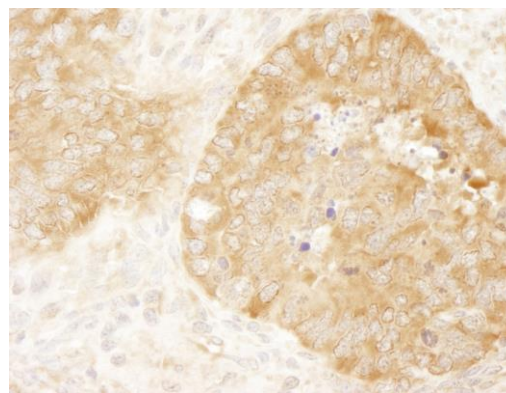
IHC MOUSE CONTROLS Colon Carcinoma CT26, Renal Cell Carcinoma, Teratoma

ADDITIONAL INFO <https://www.bethyl.com/product/IHC-00456>
Use the link above to view SDS, a current list of citations, and other product specific information.

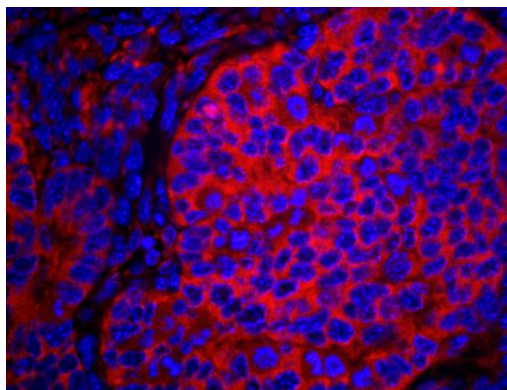
This document certifies that this product has met all of the quality control standards defined by Bethyl Laboratories, Inc.
Eric McIntush, PhD | Chief Scientific Officer Date: June 21, 2019



Detection of human eIF2alpha/EIF2S1 by immunohistochemistry. *Sample:* FFPE section of human colon carcinoma. *Antibody:* Affinity purified rabbit anti-eIF2alpha/EIF2S1 (Cat. No. IHC-00456) used at a dilution of 1:500. *Detection:* DAB



Detection of mouse eIF2alpha/EIF2S1 by immunohistochemistry. *Sample:* FFPE section of mouse teratoma. *Antibody:* Affinity purified rabbit anti-eIF2alpha/EIF2S1 (Cat. No. IHC-00456) used at a dilution of 1:100. *Detection:* DAB



Detection of mouse eIF2alpha/EIF2S1 by immunohistochemistry. *Sample:* FFPE section of mouse teratoma. *Antibody:* Affinity purified rabbit anti-eIF2alpha/EIF2S1 (Cat. No. IHC-00456) used at a dilution of 1:100. *Detection:* Red-fluorescent goat anti-rabbit IgG highly cross-adsorbed Antibody used at a dilution of 1:100.